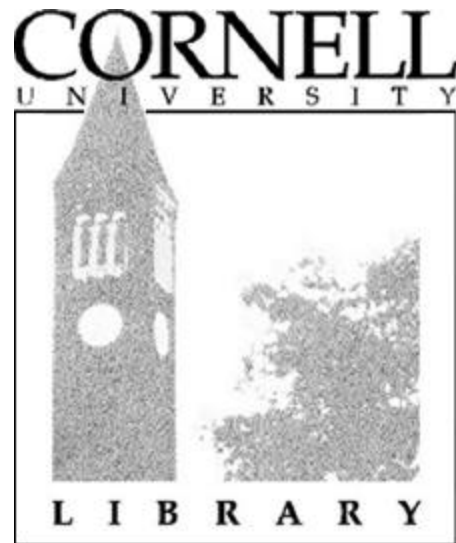


Cornell University Library  
Annual Statistics  
1999/2000



# **ANNUAL STATISTICS 1999/2000**

The Cornell University Library's annual statistical report is prepared by the Library Administration.  
Please direct questions, comments or requests for copies to:

Library Administration  
Cornell University  
201 Olin Library  
Ithaca, New York 14853-5301

Telephone: (607) 255-3393  
Fax: (607) 255-6788

October 2000

# CORNELL

U N I V E R S I T Y

---

**Office of the Carl A. Kroch University Librarian**

201 Olin Library  
Ithaca, NY 14853-5301  
Telephone: 607/255-3689  
Fax: 607/255-6788  
Email: set9@cornell.edu

October 6, 2000

SUBJECT: ANNUAL STATISTICAL REPORT

Dear Reader,

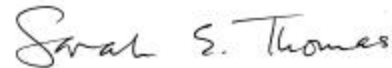
I am pleased to present this statistical information about the resources and services of the Cornell University Library. Once again, these numbers reflect one of the largest and most diverse research collections in the world. We are ranked 10th among the 121 research library members of the Association of Research Libraries (ARL), according to the criteria used to determine membership eligibility. These criteria measure size and resources deployed--volumes held, volumes added, the number of current serials, total library expenditures, and total staff. While we are proud of this ranking, we are working with the Association to come up new measures that more accurately reflect the quality of the services the Library provides and our ability to meet the information needs of the community we serve. As an increasing percentage of scholarly information becomes available in digital form, as scholarly publishing is transformed, as the number of distant learners grows, the Library must adapt to and, more importantly, help to shape these changes. The Cornell University Library is fortunate to have an outstanding staff, which allows us to be on the cutting edge of many new and important developments. I am confident that the adoption of new performance and service measures will only enhance our standing among the great research libraries of North America and the world.

I would like to call your attention to a few items of interest in the this report. Once again, we see a dramatic increase in the number of networked resources the Library is making available for use and in the use these resources are receiving. Table 8 , Networked Electronic Databases documents a 34% increase in the number of networked titles the Library made available in 1999/2000 compared to 1998/1999. (The percentage increase over the last two years is 320%.) Table 8 also shows a 62% increase in the number of successful connections to these networked resources. The 827,239 successful connections amounts to 46% of the 1,817,609 uses of traditional library materials documented in Table 7. The corresponding percentage in

1998/99 was 25%. As was the case in 1998/99, Table 14 shows that the use of traditional library materials and the number of reference services declined in 1999/2000. The particularly sharp drop in reference services is explained in large part by a correction in the count of reference transactions in the microcomputing facilities in Mann Library to match the standard definition, which was not the case in previous years. Table 14 also shows that the number of instruction sessions increased by 49% and the number of participants in these sessions increased by 38%. These large increases are a reflection of how the growth in the amount of information available, the Library's acquisition of new digital resources, and the development of new information technologies is making the research process more demanding. This, in turn, is fueling the demand for more instruction and the Library is responding. **Another interesting item is the 82% increase in expenditure in Digital Libraries & Information Technologies shown in Table 16. The Library implemented Voyager, its new library management system last year, and the purchase and installation of the software accounts for most, but not all, of the increase.**

I welcome your comments and questions about this report. I am especially interested in your ideas about how we can better reflect in future statistical reports what we are accomplishing and how effectively we are serving our patrons.

Sincerely,



Sarah E. Thomas  
University Librarian

# CORNELL UNIVERSITY LIBRARY - ANNUAL STATISTICS 1999/2000

July 1, 1999 - June 30, 2000

## TABLE OF CONTENTS

Definition of Terms Used .....	iii
<b>Library Resources</b>	
Table 1 Growth of Printed Volumes .....	1
Table 2 Growth of Non-Book Material.....	2
Table 3 Growth of Microform Material.....	3
Table 4 Growth of Manuscript Material.....	4
Table 5 Material in Process for Cataloging — Fiscal Years 1994/95 to 1999/2000.....	5
Table 6a Growth of Resources — Fiscal Years 1993/94 to 1999/2000.....	6
Table 6b Growth of Printed Volumes Over Time — Fiscal Years 1993/94 to 1999/2000.....	7
<b>Library Services</b>	
Table 7 Use of Materials .....	8
Table 8 Networked Electronic Databases — Fiscal Years 1997/98 to 1999/2000.....	9
Table 9 Reference Services.....	10
Table 10 User Access and Instruction.....	11
Table 11 Interlibrary Lending and Borrowing.....	12
Table 12a Cataloging of Titles .....	13
Table 12b Cataloging and Processing of Manuscript Material.....	13
Table 12c Serial and Newspaper Titles Received and Processed .....	14
Table 13 Preservation Activity.....	15
Table 14 Service Trends — Fiscal Years 1993/94 to 1999/2000.....	16
<b>Library Expenditures</b>	
Table 15 Expenditures .....	17
Table 16 Expenditures Over Time — Fiscal Years 1993/94 to 1999/2000.....	18
<b>CISER Data Archive</b>	
Table 17 Resources and Services.....	19
<b>Statistical Graphs</b>	
Graph 1 Library Resources .....	20
Graph 2 Library Services.....	21
Graph 3 Library Usage.....	22
Graph 4 Library Cataloging vs. Backlog.....	23

Cornell University Library  
ANNUAL STATISTICS 1999/2000 — July 1, 1999 - June 30, 2000

Definition of Terms..... iii

## DEFINITION OF TERMS USED IN THE CUL ANNUAL STATISTICAL REPORT

- Added:** Added physical units or titles are those units or titles that have been cataloged according to *Anglo-American Cataloging Rules* or for which other inventory records have been made available to users (e.g. minimal or provisional catalog records, accession records, or records in a database file).
- Circulation:** The act of lending an item from the library's collection for use generally (although not always) outside the library. This activity includes charging, either manually or electronically, and also renewals, each of which is reported as a circulation transaction. *See materials use.*
- Instruction sessions:** Information contacts in which a staff member, or a person invited by a staff member, provides information intended for a number of persons and planned in advance. Information service to groups may be either bibliographic instruction or library use presentations, or it may be cultural, recreational, or educational presentations. Presentations both on and off the library premises are included as long as they are sponsored by the library. Does not include meetings sponsored by other groups using library meeting rooms.
- Interlibrary loan:** A transaction in which library material, or a copy of material, is made available by one library to another upon request. It includes both lending and borrowing. The libraries involved in interlibrary loan are not under the same administration or on the same campus.
- Manuscripts:** Works written by hand or typed, including manuscript books, dissertations, letters, speeches, etc., legal papers, including printed forms completed in manuscript, and collections of such manuscripts. Includes archival material.
- Materials use:** Includes circulation and reserve transactions. In-library materials use is a count of material consulted by users in the library (not loaned), and reshelfed by the staff.
- Microforms:** Photographic reproductions of textual, tabular, or graphic material reduced in size so that they can be used only with magnification. The two main types of microforms are microreproductions on transparent material, including roll microfilm, aperture cards, microfiche, and reproductions on opaque material.
- Non-book materials:** Materials that are displayed by visual projection or magnification or through sound reproduction, or both, including sound recordings, motion pictures and video recordings, and graphic materials. Also included are maps and computer files.
- Printed volume:** A single physical unit of any printed, typewritten, handwritten, mimeographed, or processed work, distinguished from other units by a separate binding, encasement, portfolio, or other clear distinction, which has been cataloged, classified, and made ready for use. This is typically the unit used to charge circulation transactions. Includes monographs and bound volumes of serials.
- Reference transaction:** An informational contact that involves the knowledge, use, recommendations, interpretation, or instruction in the use of one or more information sources by a member of the library staff. The term includes information and referral service. Information sources include: 1) printed and non-printed materials; 2) machine-readable databases (including computer-assisted instruction); 3) the library's own catalogs and other holdings records; 4) other libraries and institutions through communication or referral; and 5) persons both inside and outside the library. When a staff member utilizes

Definitions (continued):

information gained from previous use of information sources to answer a question, report as a reference transaction even if the source is not consulted again during this transaction. Directional transactions must NOT be counted as reference transactions.

**Serial:** A publication in any medium issued in successive parts bearing numerical or chronological designations and intended to be continued indefinitely. Includes periodicals; newspapers; annuals (reports, yearbooks, etc.); the journals, memoirs, proceedings, transactions, etc. of societies; and numbered monographic series.

**Sound recordings:** Material on which sounds (only) are stored (recorded) and that can be reproduced (played back) mechanically or electronically, or both. This includes audiocassettes, audiocartridges, audioreels, talking books, compact disks, and other sound recordings.

**Subtracted:** Physical units that are withdrawn from CUL, or transferred from one CUL library to another.

**Title:** The designation of a separate bibliographic whole, whether issued in one or several volumes, reels, discs, slides, or other parts. A book or serial title may be distinguished from other such titles by its unique International Standard Book or Serial Number. The term applies equally to print, audiovisual, and other library materials. For unpublished works, it is the term used to designate a manuscript collection or an archival record series. When vertical files materials are counted, a file folder is considered a title.

**Withdrawn:** Withdrawn physical units or titles are those that have been removed from library collections and for which catalog records have been removed or marked to indicate that the units are no longer in the collections. *See also added and subtracted.*

Cornell University Library  
ANNUAL STATISTICS 1999/2000 — July 1, 1999 - June 30, 2000

**Library Resources**

Table 1	Growth of Printed Volumes .....	1
Table 2	Growth of Non-Book Material .....	2
Table 3	Growth of Microform Material .....	3
Table 4	Growth of Manuscript Material .....	4
Table 5	Material in Process for Cataloging — Fiscal Years 1994/95 to 1999/2000.....	5
Table 6a	Growth of Resources — Fiscal Years 1993/94 to 1999/2000 .....	6
Table 6b	Growth of Printed Volumes in the Library — Fiscal Years 1993/94 to 1999/2000.....	7

## LIBRARY RESOURCES

**TABLE 1: GROWTH OF PRINTED VOLUMES — JULY 1, 1999 - JUNE 30, 2000**

	<b>Volumes in Library Beginning of Year</b>	<b>Volumes Added</b>	<b>Volumes Subtracted</b>	<b>Volumes In Library End of Year</b>	<b>Net Volumes Added to Annex</b>	<b>Volumes Already in the Annex</b>	<b>Total Volumes</b>
Africana	17,378	445	237	17,586	0	0	17,586
Annex	923,645	684,376	592	1,607,429	-	-	-
Engineering	253,723	6,835	1,037	259,521	869	112,376	372,766
Fine Arts	112,452	2,931	32	115,351	-5	64,296	179,642
Geneva Experiment Station	45,728	1,067	93	46,702	3	1,279	47,984
Hotel	21,567	3,551	405	24,713	31	3,010	27,754
Industrial & Labor Relations	181,806	4,976	617	186,165	314	18,257	204,736
Law	462,134	11,791	2,083	471,842	0	0	471,842
Management	90,696	3,525	1,750	92,471	64	64,456	156,991
Mann/Entomology	551,471	15,655	225,193	341,933	223,063	172,549	737,545
Mathematics	51,733	1,598	11	53,320	0	0	53,320
Medical College	168,746	3,790	4,763	167,773	0	0	167,773
Music	121,551	3,067	47	124,571	28	2,750	127,349
Olin/Kroch (Asia Collections)	3,057,209	111,875	465,812	2,703,272	459,258	455,706	3,618,236
Physical Sciences	85,045	2,038	269	86,814	159	22,272	109,245
Rare & Ms Collections	212,554	1,990	0	214,544	0	0	214,544
Uris	170,411	3,116	336	173,191	0	0	173,191
Veterinary	89,393	564	50	89,907	0	6,694	96,601
<b>TOTAL</b>	<b>6,617,242</b>	<b>863,190</b>	<b>703,327</b>		<b>683,784</b>	<b>923,645</b>	<b>6,777,105</b>

Total Printed Volumes - June 30, 2000 **6,777,105**

Total Printed Volumes - June 30, 1999 **6,617,242**

**Total Growth of Printed Volumes -- July 1, 1999 - June 30, 2000** **159,863**

## LIBRARY RESOURCES

**TABLE 2: GROWTH OF NON-BOOK MATERIAL — JULY 1, 1999 - JUNE 30, 2000**

	<u>Maps</u>		<u>Motion Pictures</u>		<u>Filmstrips &amp; Slides</u>		<u>Video Tapes</u>		<u>Sound Recordings</u>		<u>Computer Files</u>		<u>Total Non-Book Material</u>	
	<u>Beg'ng of Year</u>	<u>End of Year</u>	<u>Beg'ng of Year</u>	<u>End of Year</u>	<u>Beg'ng of Year</u>	<u>End of Year</u>	<u>Beg'ng of Year</u>	<u>End of Year</u>	<u>Beg'ng of Year</u>	<u>End of Year</u>	<u>Beg'ng of Year</u>	<u>End of Year</u>		
Africana	7	7	0	0	0	1	726	764	266	266	7	9	1,047	
Engineering	0	0	0	0	0	0	116	125	65	65	943	1,344	1,534	
Fine Arts	0	0	0	0	0	0	250	253	0	0	82	83	336	
Geneva Experiment Station	289	289	0	0	0	0	16	16	10	0	34	34	339	
Hotel	264 *	295	0	0	0	0	1,545	1,665	138	140	49	194	2,294	
Industrial & Labor Relations	0	0	605	605	942	950	821	875	1,999	2,103	203	208	4,741	
Law	0	0	1	1	0	0	159	162	359	359	69	86	608	
Management	0	0	0	0	0	0	24	24	0	0	1,286	1,464	1,488	
Mann/Entomology	3,190	3,191	0	0	0	0	7	10	0	0	2,507	2,840	6,041	
Mathematics	0	0	2	2	0	0	95	96	5	5	61	66	169	
Medical Archives	0	0	327	345	5,140	5,140	1,322	1,336	2,046	2,046	0	0	8,867	
Medical College	0	0	0	0	928	928	751	769	0	0	189	200	1,897	
Music	0	0	0	0	193	193	750	772	51,796	53,675	19	21	54,661	
Olin/Kroch (Asia Collections)	228,809	231,692	0	0	1,524	1,524	2,520	3,092	780	947	1,782	2,230	239,485	
Physical Sciences	202	202	0	0	20	20	133	134	0	0	231	197	553	
Rare & Ms Collections	1,370	1,390	2,778	2,833	606	863	700	757	8,091	8,585	3	7	14,435	
Uris	0	0	146	146	3,503	3,503	2,386	2,444	21,286	21,286	35	31	27,410	
Veterinary	0	0	0	0	27,248	27,248	1,158	1,329	538	538	56	56	29,171	
<b>TOTAL</b>	<b>234,131</b>	<b>237,066</b>	<b>3,859</b>	<b>3,932</b>	<b>40,104</b>	<b>40,370</b>	<b>13,479</b>	<b>14,623</b>	<b>87,379</b>	<b>90,015</b>	<b>7,556</b>	<b>9,070</b>	<b>395,076</b>	
													Total Non-book Material - June 30, 2000	395,076
													Total Non-book Material - June 30, 1999	386,508
													<b>Total Growth of Non-book Materials -- July 1, 1999 - June 30, 2000</b>	<b>8,568</b>

\* Adjusted to include 264 maps in the Hotel Library not reported in fiscal year 1998/99.

## LIBRARY RESOURCES

**TABLE 3: GROWTH OF MICROFORM MATERIAL — JULY 1, 1999 - JUNE 30, 2000**

	<u>Microfilm</u>		<u>Microfiche</u>		<u>Microcard</u>		<u>Microprint</u>		<u>TOTAL Microforms</u>
	<u>Beg'ng of Year</u>	<u>End of Year</u>	<u>Beg'ng of Year</u>	<u>End of Year</u>	<u>Beg'ng of Year</u>	<u>End of Year</u>	<u>Beg'ng of Year</u>	<u>End of Year</u>	
Africana	2,082	2,171	16,082	16,082	0	0	0	0	18,253
Engineering	1,470	1,470	1,926,846	1,955,579	84,052	84,052	0	0	2,041,101
Fine Arts	578	578	6,050	6,050	0	0	0	0	6,628
Geneva Experiment Station	129	129	1,514	1,514	0	0	0	0	1,643
Hotel	1,015	1,013	12,462	12,772	0	0	0	0	13,785
Industrial & Labor Relations	6,943	7,297	35,571	36,536	0	0	0	0	43,833
Law	5,408	5,422	696,122	735,147	0	0	0	0	740,569
Management	2,873	2,975	816,377	809,843	42,193	42,193	0	0	855,011
Mann/Entomology	4,675	4,856	657,189	668,005	2,701	2,701	1,244	1244	676,806
Mathematics	56	56	1,275	1,275	0	0	0	0	1,331
Medical Archives	560	560	30	30	0	0	0	0	590
Medical College	509	509	12,030	12,210	0	0	0	0	12,719
Music	1,311	1,313	5,791	5,791	550	550	0	0	7,654
Olin/Kroch (Asia Collections)	157,261	161,498	1,739,873	1,804,492	9,998	9,998	1,047,148	1047165	3,023,153
Physical Sciences	1,153	1,154	24,748	24,788	0	0	0	0	25,942
Rare & Ms Collections	5,399	5,411	24,517	26,417	0	0	0	0	31,828
Uris	0	0	120,119	121,808	0	0	0	0	121,808
Veterinary	210	210	25,750	25,760	0	0	0	0	25,970
<b>TOTAL</b>	<u>191,632</u>	<u>196,622</u>	<u>6,122,346</u>	<u>6,264,099</u>	<u>139,494</u>	<u>139,494</u>	<u>1,048,392</u>	<u>1,048,409</u>	<u>7,648,624</u>

Total Microform Material - June 30, 2000      7,648,624

Total Microform Material - June 30, 1999      7,501,864

**Total Growth of Microform Material -- July 1, 1999 - June 30, 2000      146,760**

## LIBRARY RESOURCES

**TABLE 4: GROWTH OF MANUSCRIPT MATERIAL — JULY 1, 1999 - JUNE 30, 2000**

<b><u>Unit Libraries/Departments</u></b>	<b><u>Cubic Feet at Beginning of Year</u></b>	<b><u>Cubic Feet Added</u></b>	<b><u>Cubic Feet Subtracted</u></b>	<b><u>Cubic Feet at End of Year</u></b>
Industrial & Labor Relations Labor Mgmt Documentation Center	10,692	332	6	11,018
Medical Archives	6,342	121	36	6,426
Rare & Manuscript Collections	<u>19,217</u>	<u>514</u>	<u>0</u>	<u>19,731</u>
<b>Subtotal</b>	36,251	967	42	37,175
<b><u>Library Annex</u></b>				
Industrial & Labor Relations Labor Mgmt Documentation Center	6,464	0	0	6,464
Rare & Manuscript Collections	<u>21,104</u>	<u>0</u>	<u>234</u>	<u>20,870</u>
<b>Subtotal</b>	27,568	0	234	27,334
 <b>TOTAL</b>	 <b><u><u>63,819</u></u></b>	 <b><u><u>967</u></u></b>	 <b><u><u>276</u></u></b>	 <b><u><u>64,509</u></u></b>

## LIBRARY RESOURCES

**TABLE 5: MATERIAL IN PROCESS FOR CATALOGING — Fiscal Years 1994/95 - 1999/2000**

<u>Processing Center</u>	<u>Volumes / Pieces</u>					
	<u>1994/1995</u>	<u>1995/1996</u>	<u>1996/1997</u>	<u>1997/1998</u>	<u>1998/1999</u>	<u>1999/2000</u>
Central Technical Services*	156,586 *	154,670 *	109,432 *	98,001 *	61,617 *	43,893 *
Industrial & Labor Relations (ILR)	1,482	1,111	896	808	434	935
Law	2,645	2,605	2,728	2,638	2,306	1,700
Mann**	4,565 **	3,760 **	3,912 **	5,061 **	4,791 **	3,804 **
Music (predominantly audio/video)	10,954	8,728	8,939	7,142	2,741	2,593
Rare and Manuscript Collections	18,233	21,596	18,351	12,413 ***	12,282	10,892
<b>TOTAL</b>	<b><u>194,465</u></b>	<b><u>192,470</u></b>	<b><u>144,258</u></b>	<b><u>126,063</u></b>	<b><u>84,171</u></b>	<b><u>63,817</u></b>

\* Includes processing for Africana, Engineering, Fine Arts, Hotel, Management, Mathematics, Music, Olin/Kroch (including maps and Asia Collections), Physical Sciences and Uris.

\*\* Includes processing for Entomology, Geneva, and Veterinary.

\*\*\* Adjusted number based on backlog count.

## LIBRARY RESOURCES

**TABLE 6a: GROWTH OF RESOURCES — Fiscal Years 1993/94 - 1999/2000**

<u>Item Count:</u>	<u>1993/94</u>	<u>1994/95</u>	<u>1995/96</u>	<u>1996/97</u>	<u>1997/98</u>	<u>1998/99</u>	<u>1999/2000</u>	<b>Total Growth 1994-2000</b>	<b>Percent Change</b>
								Incr/(Decr)	Incr/(Decr)
Printed Volumes & Non-Book Materials									
Printed Volumes	5,857,715	5,999,592	6,120,024	6,284,891	6,429,133	6,617,242	6,777,105	<b>919,390</b>	16%
Maps	211,872	218,360	221,701	224,936	228,860	233,867	237,066	<b>25,194</b>	12%
Motion Pictures	3,575	3,656	3,679	3,693	3,842	3,859	3,932	<b>357</b>	10%
Filmstrips and Slides	32,449	32,432	32,737	33,511	39,025	40,104	40,370	<b>7,921</b>	24%
Video Tapes	5,972	6,690	8,189	9,525	12,056	13,479	14,623	<b>8,651</b>	145%
Sound Recordings	73,142	74,840	76,490	77,709	81,254	87,379	90,015	<b>16,873</b>	23%
Computer Files	3,161	3,406	4,327	5,112	6,112	7,556	9,070	<b>5,909</b>	187%
Microforms									
Microfilm	169,709	175,868	180,098	182,211	186,805	191,632	196,622	<b>26,913</b>	16%
Microfiche	5,157,951	5,419,699	5,623,757	5,806,851	5,984,167	6,122,346	6,264,099	<b>1,106,148</b>	21%
Microcard	139,494	139,494	139,494	139,494	139,494	139,494	139,494	<b>0</b>	0%
Microprint	1,048,392	1,048,392	1,048,392	1,048,392	1,048,392	1,048,392	1,048,409	<b>17</b>	0%
Serial Subscriptions	63,462	62,863	62,846	63,409	63,051	63,232	63,306	<b>(156)</b>	(0%)
Newspaper Subscriptions	423	430	421	451	449	426	492	<b>69</b>	16%
Archives (manuscript material in cu.ft.)	53,526	54,823	55,556	56,061	62,868 *	63,819 *	64,509 *	<b>10,983</b> *	21% *
Material in Process for Cataloging	211,650	194,465	192,470	144,258	126,063	84,171	63,817	<b>(147,833)</b>	(70%)

\* Medical Archive manuscript material reported for 1997/98, 1998/99, 1999/2000 only.

## LIBRARY RESOURCES

**TABLE 6b: GROWTH OF PRINTED VOLUMES OVER TIME - Fiscal Years 1993/94 through 1999/2000**

UNIT	1993/94	1994/95	1995/96	1996/97	1997/98	1998/99	1999/2000	TOTAL GROWTH	Percent Change
								1994-2000	Incr/(Decr)
Africana	14,441	15,183	15,306	15,937	16,859	17,378	17,586	<b>3,145</b>	22%
Engineering	320,651	334,175	343,778	352,351	360,453	366,099	372,766	<b>52,115</b>	16%
Fine Arts	152,520	157,720	163,328	168,327	173,184	176,748	179,642	<b>27,122</b>	18%
Geneva Experiment Station	55,002	54,762	48,820	45,475	46,275	47,007	47,984	<b>(7,018)</b>	(13%)
Hotel	27,407	24,483	24,855	23,050	23,897	24,577	27,754	<b>347</b>	1%
Industrial & Labor Relations	189,976	194,337	195,934	192,063	195,689	200,063	204,736	<b>14,760</b>	8%
Law	417,645	423,824	432,733	441,103	451,026	462,134	471,842	<b>54,197</b>	13%
Management	154,810	158,079	161,045	159,262	154,566	155,152	156,991	<b>2,181</b>	1%
Mann/Entomology	662,157	677,030	690,213	704,316	706,268	724,020	737,545	<b>75,388</b>	11%
Mathematics	43,940	45,500	46,962	48,147	49,371	51,733	53,320	<b>9,380</b>	21%
Medical College	160,190	164,357	167,912	171,545	168,354	168,746	167,773	<b>7,583</b>	5%
Music	108,830	111,952	115,549	118,763	121,594	124,301	127,349	<b>18,519</b>	17%
Olin/Kroch (Asia Collections)*	3,195,071	3,077,894	3,157,284	3,281,689	3,384,482	3,512,915	3,618,236	<b>423,165</b> *	13% *
Physical Sciences	95,594	98,106	100,462	102,883	104,930	107,317	109,245	<b>13,651</b>	14%
Rare & Ms Collections*	n/a	201,314	203,381	204,288	210,905	212,554	214,544	<b>13,230</b>	7%
Uris	173,603	173,503	162,817	164,678	167,168	170,411	173,191	<b>(412)</b>	(0%)
Veterinary	85,878	87,373	89,750	91,014	94,131	96,087	96,601	<b>10,723</b>	12%
<b>TOTAL</b>	<b>5,857,715</b>	<b>5,999,592</b>	<b>6,120,129</b>	<b>6,284,891</b>	<b>6,429,152</b>	<b>6,617,242</b>	<b>6,777,105</b>	<b>718,076</b>	12%

\* Rare and Ms Collections was included in Olin prior to the opening of Kroch Library in 1994/95; Olin percentage reflects the removal of Rare and Ms Collections volumes from the count.

Cornell University Library  
ANNUAL STATISTICS 1999/2000 — July 1, 1999 - June 30, 2000

**Library Services**

Table 7	Use of Materials.....	8
Table 8	Networked Electronic Databases – Fiscal Years 1997/98 – 1999/2000.....	9
Table 9	Reference Services.....	10
Table 10	User Access and Instruction.....	11
Table 11	Interlibrary Lending and Borrowing.....	12
Table 12a	Cataloging of Titles .....	13
Table 12b	Cataloging and Processing of Manuscript Material.....	13
Table 12c	Serial and Newspaper Titles Received and Processed.....	14
Table 13	Preservation Activity.....	15
Table 14	Service Trends – Fiscal Years 1993/94 to 1999/2000 .....	16

## LIBRARY SERVICES

**TABLE 7: USE OF MATERIALS — JULY 1, 1999 - JUNE 30, 2000**

	<u>General Circulation</u>		<u>In-Library Use</u>	<u>TOTAL Materials Use</u>
	<u>Online Circ Ck'd Out/Renewed</u>	<u>Manual Circulation</u>		
Africana	11,622	48	3,887	15,557
Annex *	2,139	254	2,808	5,201
Engineering	55,644	1,603	44,069	101,316
Fine Arts	55,611	1,049	27,593	84,253
Geneva Experiment Station	1,444	300	7,032	8,776
Hotel	45,186	0	9,624	54,810
Industrial & Labor Relations	30,034	84	8,376	38,494
Law	25,747	110	17,612	43,469
Management	32,407	590	17,671	50,668
Mann/Entomology	153,984	1,487	99,794	255,265
Mathematics	19,195	2,025	11,603	32,823
Medical College	83,372	0	113,086	196,458
Music	35,058	189	3,218	38,465
Olin/Kroch (Asia Collections)	338,950	17,623	206,812	563,385
Physical Sciences	26,063	295	71,500	97,858
Rare & Ms Collections	0	0	18,612	18,612
Uris	135,304	1,201	42,695	179,200
Veterinary	26,407	3,475	3,117	32,999
<b>TOTAL</b>	<b><u>1,078,167</u></b>	<b><u>30,333</u></b>	<b><u>709,109</u></b>	<b><u>1,817,609</u></b>

\* Annex numbers do not include 14,051 items that were distributed to individual units for circulation.

## LIBRARY SERVICES

**TABLE 8: NETWORKED ELECTRONIC DATABASES**

<u>Type of Database*</u>	<u>1997/1998 Total Available</u>	<u>1998/1999 Total Available</u>	<u>1999/2000 Total Available</u>	<u>Growth in Databases</u>
Audio-Visual	6	9	12	100%
Catalogs	19	28	42	121%
Full Text Journals	417	2,580 **	3,321 **	696%
Full Text Other	318	465	762	140%
Indexes	235	286	288	23%
Numeric	266	284	287	8%
Spatial	25	29	32	28%
	<u>1997/1998</u>	<u>1998/1999</u>	<u>1999/2000</u>	<u>Growth (1998/99 - 1999/00)</u>
<b>Networked Resources Available***</b>	1,102	3,460	4,625	34%
<b>Networked Resources Connections****</b>	n/a	509,210	827,239	62%
<b>Library Gateway Hits</b>	n/a	32,979,519	41,293,142	25%

\* A title may be included in more than one database type.

\*\* Includes full text journals in ProQuest (ABI Inform and Periodical Abstracts).

\*\*\* Represents the number of discrete titles.

\*\*\*\* Represents the successful connection attempts to resources on the Library Gateway.

## LIBRARY SERVICES

**TABLE 9: REFERENCE SERVICES — JULY 1, 1999 - JUNE 30, 2000**

	<b>Total Reference Services</b>
Africana	860
Engineering	6,804
Fine Arts	4,512
Geneva Experiment Station	480
Hotel	5,121 *
Industrial & Labor Relations	12,074
Law	5,876
Management	5,216
Mann/Entomology	27,473 **
Mathematics	1,240
Medical Archives	351
Medical College	17,993
Music	911 ***
Olin/Kroch (Asia Collections)	36,475
Physical Sciences	2,203
Rare & Ms Collections	7,407
Uris	7,857
Veterinary	9,265
<b>TOTAL</b>	<b>152,118</b>

\* This is the first year the Hotel School has included fee-based reference services in this statistic.

\*\* The John Leland Stone Microcomputing Center counts (which are included in the total) have been corrected to match the definition for reference transactions.

\*\*\*During the renovation of the Music Library, a large portion of the collection was housed in Olin Library.

## LIBRARY SERVICES

**TABLE 10: USER ACCESS AND INSTRUCTION — JULY 1, 1999 - JUNE 30, 2000**

	<u>Bibliographies &amp; Handouts</u>	<u>Hours of Operation Per Typical Week*</u>	<u>Instruction Sessions</u>		<u>Tours</u>	
			<u>Number</u>	<u>Participants</u>	<u>Number</u>	<u>Participants</u>
Africana	0	78.0	0	0	1	15
Annex	0	35.0	0	0	3	18
Engineering	22	89.0	54	1,129	0	0
Entomology	n/a ***	30.0	n/a ***	n/a ***	n/a ***	n/a ***
Fine Arts	250	82.0	10	250	9	59
Geneva Experiment Station	0	39.0	83	431	5	15
Hotel	9	93.0	20	333	17	217
Industrial & Labor Relations	0	87.0	92	1,425	30	122
Law	31	85.0	190	3,478	24	252
Management	10	96.0	114	2,282	27	131
Mann	0	92.0	86	1,496	19	257
Mathematics	0	85.0	7	80	3	53
Medical Archives	0	45.0	1	1	3	8
Medical College	639	108.0	70	252	12	109
Music	1	78.0	7	252	30	200
Olin/Kroch (Asia Collections)	441	87.0	459	5,463	129	823
Physical Sciences	5	97.0	41	399	0	0
Rare & Ms Collections	0	44.0	107	1,736	71	715
Uris	n/a **	114.0	n/a **	n/a **	n/a **	n/a **
Veterinary	8	98.0	32	221	18	200
<b>TOTAL</b>	<b><u>1,416</u></b>	<b><u>82.2</u> AVG</b>	<b><u>1,373</u></b>	<b><u>19,228</u></b>	<b><u>401</u></b>	<b><u>3,194</u></b>

\* During the academic year.

\*\* Reported with Olin/Kroch (Asia Collections).

\*\*\* Reported with Mann Library.

## LIBRARY SERVICES

**TABLE 11: INTERLIBRARY LENDING & BORROWING — JULY 1, 1999 - JUNE 30, 2000**

	LENDING				BORROWING			
	Loans		Photocopies		Loans		Photocopies	
	Titles Requested	Filled	Titles Requested	Filled	Titles Requested	Filled	Titles Requested	Filled
<b>Item Totals</b>	21,757	14,464	38,509	27,373	8,480	7,505	18,153	17,201
<b>TOTAL LENDING:</b>			<b>Requested</b>	60,266	<b>TOTAL BORROWING:</b>		<b>Requested</b>	26,633
			<b>Filled</b>	41,837			<b>Filled</b>	24,706

## LIBRARY SERVICES

**TABLE 12a: CATALOGING OF TITLES — JULY 1, 1999 - JUNE 30, 2000**

	<u>Mono- graphs</u>	<u>Mono- graphs on Microform</u>	<u>Serials</u>	<u>Serials on Micro- form</u>	<u>Maps</u>	<u>Audio/ Visuals</u>	<u>Computer Files</u>	<u>TOTAL Cataloged</u>	<u>Reclassified &amp; Recataloged Titles</u>
* Central Tech. Services	n/a	n/a	n/a	n/a	n/a	n/a	n/a	100,481	1,326
Geneva Experiment Station	12	0	0	0	0	0	0	12	0
Industrial & Labor Relations	3,746	32	992	53	0	4	28	4,855	368
Law	2,235	195	157	8	0	3	24	2,622	3,702
** Mann	8,463	2,907	402	77	3	11	472	12,335	205
Medical College	1,306	0	68	0	0	23	3	1,400	0
Music	0	0	0	0	0	1,495	4	1,499	0
Rare & Ms Collections	1,970	0	20	0	13	0	0	2,003	7,589
							<b>TOTAL</b>	125,207	13,190
<b>Total Titles Cataloged &amp; Recataloged</b>									<b>138,397</b>

\* Includes Africana, CISER Data Archives, Engineering, Fine Arts, Hotel, Management, Mathematics, Music (books & scores), Olin/Kroch (including maps and Asia Collections), Physical Sciences, and Uris titles.

\*\* Includes Entomology and Veterinary titles.

**TABLE 12b: CATALOGING & PROCESSING MANUSCRIPT MATERIAL — JULY 1, 1999 - JUNE 30, 2000**

	<u>Manuscripts Records</u>	<u>Collections Processed</u>	<u>Finding Aids Produced</u>
Industrial & Labor Relations			
Labor Mgmt Document Center	93	43	28
Medical Archives	0	4	4
Rare and Manuscript Collections	<u>222</u>	<u>256</u>	<u>72</u>
TOTAL	315	303	104

## LIBRARY SERVICES

**TABLE 12c: SERIAL & NEWSPAPER TITLES RECEIVED & PROCESSED — JULY 1, 1999 - JUNE 30, 2000**

	Serials				Newspapers			
	Titles Beginning of Year	Titles Added	Titles Subtracted *	Total Serial Titles	Beginning of Year	Titles Added	Titles Subtracted *	Total Newspaper Titles
** Central Tech. Services	39,880	327	330	39,877	353	69	0	422
Geneva Experiment Station	919	0	9	910	7	0	3	4
Hotel	1,554	169	61	1,662	17	0	0	17
Industrial & Labor Relations	4,166	79	12	4,233	3	0	0	3
Law	6,111	157	12	6,256	7	0	0	7
*** Mann	8,227	114	496	7,845	20	0	0	20
Medical College	1,565	145	2	1,708	17	0	0	17
Veterinary	810	5	0	815	2	0	0	2
<b>TOTAL</b>	<b>63,232</b>	<b>996</b>	<b>922</b>	<b>63,306</b>	<b>426</b>	<b>69</b>	<b>3</b>	<b>492</b>

\* Titles subtracted include titles that ceased to be published and subscriptions cancelled.

\*\* Includes Africana, Engineering, Fine Arts, Management, Mathematics, Music, Olin/Kroch, Physical Sciences and Uris titles.

\*\*\* Includes Entomology titles.

## LIBRARY SERVICES

**TABLE 13: PRESERVATION ACTIVITY — July 1, 1999 - June 30, 2000**

	<b>Contract</b>	<b>In-House</b>	<b>Total</b>
<b><u>Conservation Treatment</u></b>			
Bound Volumes	0	62,153	62,153
Unbound Sheets	0	362	362
Photographs, Non-paper Items	0	53	53
Custom Fitted, Protective Enclosures	0	1,507	1,507
Total Conservation Treatment	0	64,075	64,075
 <b><u>Commercial Binding</u></b>			32,863
 <b><u>Mass Treatment</u></b>			
Bound Volume, Mass Decidified			476
Linear Feet, Manuscripts Decidified			0
<hr/>			
<b><u>Preservation Photocopying</u></b>			
Bound Volumes Photocopied			364
Manuscripts photocopied			2,880
			3,244
 <b><u>Preservation Microfilm (Roll Film)</u></b>			
Volumes			1,368
Titles			630
Exposures			65,757
			1,998
<hr/>			

## LIBRARY SERVICES

**TABLE 14: SERVICE TRENDS — Fiscal Years 1993/94 - 1999/2000**

<u>Type of Service:</u>	<u>1993/94</u>	<u>1994/95</u>	<u>1995/96</u>	<u>1996/97</u>	<u>1997/98</u>	<u>1998/99</u>	<u>1999/2000</u>	<b>Total Growth 1994-2000</b>	<b>Percent Change</b>
								Incr/(Decr)	Incr/(Decr)
Total Materials Use (Table 7)	2,224,515	2,302,492	2,292,681	2,365,253	2,199,747	2,005,320	1,817,609	<b>(406,906)</b>	(18%)
In-Library Materials Use (Table 7)	1,012,704	1,080,080	1,074,574	1,154,780	1,035,708	825,564	709,109	<b>(303,595)</b>	(30%)
General Circulation (Table 7)	1,211,811	1,222,412	1,169,242	1,210,473	1,164,039	1,179,756	1,108,500	<b>(103,311)</b>	(9%)
Reference Services (Table 9)	266,151	248,238	208,931	206,269	211,994	190,865	152,118	<b>(114,033)</b>	(43%)
Instructional Sessions (Table 10)	734	826	1,058	1,068	997	922	1,373	<b>639</b>	87%
Instructional Session Participants (Table 10)	10,695	12,530	12,955	13,608	13,403	13,974	19,228	<b>8,533</b>	80%
Interlibrary Loan - Lending (Table 11)	26,477	27,108	24,620	29,547	36,421	39,481	41,837	<b>15,360</b>	58%
- Borrowing (Table 11)	19,950	21,699	19,865	20,830	25,628	23,202	24,706	<b>4,756</b>	24%
Cataloging of Titles (Table 12a)	82,372	115,688	94,080	100,761	111,722	152,429	125,207	<b>42,835</b>	52%

Cornell University Library  
ANNUAL STATISTICS 1999/2000 — July 1, 1999 - June 30, 2000

**Library Expenditures**

Table 15	Expenditures .....	17
Table 16	Expenditures Over Time – Fiscal Years 1993/94 to 1999/2000 .....	18

## LIBRARY EXPENDITURES

**Table 15: EXPENDITURES — July 1, 1999 - June 30, 2000**

	<u>Salaries</u>	<u>Fringe Benefits</u>	<u>TOTAL Employment Expense</u>	<u>Library Materials</u>	<u>Postage and Binding</u>	<u>Operating Expenses</u>	<u>TOTAL Expenditures By Unit</u>
<b>Library Administration</b>	\$777,437	\$266,281	\$1,043,718			\$604,565	\$1,648,283
<b>Library Central Services</b>							
Administrative Operations	\$626,365	\$209,311	\$835,676			\$267,094	\$1,102,770
Technical Services	2,448,386	807,801	3,256,187			803,656	4,059,843
Preservation	855,226	277,694	1,132,920	\$47,764		268,342	1,449,026
Digital Lib & Information Technologies**	729,382	240,358	969,740			2,460,870	3,430,610
Subtotal Central Services	<u>\$4,659,359</u>	<u>\$1,535,164</u>	<u>\$6,194,523</u>	<u>\$47,764</u>	<u>\$0</u>	<u>\$3,799,962</u>	<u>\$10,042,249</u>
<b>Unit Libraries</b>							
Africana	\$97,356	\$30,930	\$128,286	\$28,193	*	\$25,865	\$182,344
Annex	76,818	26,886	103,704		*	17,475	121,179
Engineering	344,765	106,287	451,052	739,665	*	54,643	1,245,360
Fine Arts	197,737	58,540	256,277	132,746	*	26,510	415,533
Geneva Exp. Station	82,735		82,735	173,170	\$4,049	53,700	313,654
Hotel	423,765	122,206	545,971	315,955	2,771	195,238	1,059,935
Ind. & Labor Relations	1,026,009		1,026,009	330,777	6,139	321,057	1,683,982
Law	875,493	285,915	1,161,408	896,712	62,502	94,026	2,214,648
Management	282,115	88,960	371,075	300,443	*	32,546	704,064
Mann	2,547,926	37,517	2,585,443	1,512,631	49,218	1,341,289	5,488,581
Mathematics	110,654	30,806	141,460	240,687	*	11,381	393,528
Medical	1,863,809	854	1,864,663	1,126,096	38,625	473,094	3,502,478
Medical Archives	53,346	16,004	69,350	35		5,220	74,605
Music	200,193	55,963	256,156	108,543	*	35,918	400,617
Olin/Kroch/Uris	3,213,053	1,029,034	4,242,087	4,903,865	306,995	473,148	9,926,095
Physical Sciences	206,302	63,975	270,277	822,355	*	65,660	1,158,292
Rare & Ms Collections	813,425	279,488	1,092,913	463,875	*	170,467	1,727,255
Veterinary	234,831		234,831	354,274	13,042	115,857	718,004
Subtotal Unit Libraries	<u>\$12,650,332</u>	<u>\$2,233,365</u>	<u>\$14,883,697</u>	<u>\$12,450,022</u>	<u>\$483,341</u>	<u>\$3,513,094</u>	<u>\$31,330,154</u>
<b>GRAND TOTAL</b>	<u><u>\$18,087,128</u></u>	<u><u>\$4,034,810</u></u>	<u><u>\$22,121,938</u></u>	<u><u>\$12,497,786</u></u>	<u><u>\$483,341</u></u>	<u><u>\$7,917,621</u></u>	<u><u>\$43,020,686</u></u>

\* Included in Olin/Kroch/Uris figure.

\*\* Includes Cornell Institute for Digital Collections

## LIBRARY EXPENDITURES

**TABLE 16: EXPENDITURES OVER TIME -- Fiscal Years 1993/94 to 1999/2000**

Unit	1993/94	1994/95	1995/96	1996/97	1997/98	1998/99	1999/2000	Accumulated	Percent
								CHANGE	Change
								Incr/(Decr)	Incr/(Decr)
<b>Library Administration</b>	\$1,597,699	\$1,488,468	\$1,541,873	\$1,749,229	\$1,520,919	\$1,529,207	\$1,648,283	<b>\$50,584</b>	
<b>Library Central Services</b>									
Administrative Operations	\$934,562	\$948,003	\$952,232	\$1,060,980	\$1,064,051	\$1,119,271	\$1,102,770	<b>\$168,208</b>	
Technical Services	3,583,004	3,105,819	3,242,566	3,284,341	3,222,102	3,578,400	4,059,843	<b>\$476,839</b>	
Preservation	1,078,114	1,174,348	1,390,868	1,421,554	1,174,330	1,300,009	1,449,026	<b>\$370,912</b>	
Digital Lib & Information Technologies	1,056,689	1,063,535	1,563,985	1,100,409 *	1,443,500 *	1,889,613 *	3,430,610 *	<b>\$2,373,921</b>	
Subtotal Central Services	<u>\$6,652,369</u>	<u>\$6,291,705</u>	<u>\$7,149,651</u>	<u>\$6,867,284</u>	<u>\$6,903,983</u>	<u>\$7,887,293</u>	<u>\$10,042,249</u>	<b>\$3,389,880</b>	
<b>Unit Libraries</b>									
Africana	\$114,223	\$119,450	\$122,884	\$128,168	\$149,077	\$148,319	\$182,344	<b>\$68,121</b>	
Annex	39,998	42,666	51,540	45,661	61,038	78,215	121,179	<b>81,181</b>	
Engineering	1,167,076	1,122,076	1,082,361	1,117,399	1,116,527	1,132,410	1,245,360	<b>\$78,284</b>	
Fine Arts	391,727	445,340	457,093	473,333	437,101	409,525	415,533	<b>23,806</b>	
Geneva Experiment Station	247,473	267,194	286,774	256,428	280,560	298,643	313,654	<b>\$66,181</b>	
Hotel	695,680	745,073	712,552	749,284	873,097	1,091,554	1,059,935	<b>\$64,255</b>	
Industrial & Labor Relations	1,498,443	1,481,388	1,462,191	1,477,328	1,572,537	1,597,109	1,683,982	<b>\$185,539</b>	
Law	1,833,257	1,961,184	1,975,808	1,966,174	2,017,341	2,224,837	2,214,648	<b>\$381,391</b>	
Management	603,816	630,040	665,510	663,479	694,744	713,866	704,064	<b>\$100,248</b>	
Mann	3,710,245	3,967,331	3,915,530	4,202,351	4,897,133	5,565,543	5,488,581	<b>1,778,336</b>	
Mathematics	295,036	309,620	301,093	332,559	357,265	355,628	393,528	<b>\$98,492</b>	
Medical Archives	52,399	61,250	61,008	62,984	73,785	70,829	74,605	<b>22,206</b>	
Medical College	2,659,572	2,838,830	3,082,395	3,242,743	3,196,432	3,428,986	3,502,478	<b>\$842,906</b>	
Music	348,637	370,005	376,456	384,489	403,548	412,316	400,617	<b>51,980</b>	
Olin/Kroch/Uris	7,336,855	7,631,512	7,737,453	8,405,801	8,998,613	9,292,062	9,926,095	<b>\$2,589,240</b>	
Physical Sciences	959,687	971,991	1,024,668	1,058,925	988,200	998,585	1,158,292	<b>198,605</b>	
Rare & Ms Collections	1,154,196	1,241,166	1,493,387	1,594,317	1,594,107	1,885,125	1,727,255	<b>\$573,059</b>	
Veterinary	627,725	569,853	562,981	564,129	605,494	722,360	718,004	<b>90,279</b>	
Subtotal Unit Libraries	<u>\$23,736,045</u>	<u>\$24,775,969</u>	<u>\$25,371,684</u>	<u>\$26,725,552</u>	<u>\$28,316,599</u>	<u>\$30,425,912</u>	<u>\$31,330,154</u>	<b>\$7,594,109</b>	
<b>GRAND TOTAL</b>	<u>\$31,986,113</u>	<u>\$32,556,142</u>	<u>\$34,063,208</u>	<u>\$35,342,065</u>	<u>\$36,741,501</u>	<u>\$39,842,412</u>	<u>\$43,020,686</u>	<b>\$11,034,573</b>	34%
CPI & Relative 1982-1984 Dollar Value	148.0 : \$0.6756	152.5 : \$0.6557	156.7 : \$0.6382	160.3 : \$0.6238	163.0 : \$0.6135	166.2 : \$0.6017	172.3 : \$0.5804	24.3	16.4%
1982-1984 Dollar Base Value	\$21,609,818	\$21,347,062	\$21,739,139	\$22,046,380	\$22,540,911	\$23,973,179	\$24,969,206	<b>\$3,359,388</b>	15.55%

\* Includes Cornell Institute for Digital Collections. This figure was previously reported separately in 1996/97, 1997/98, and 1998/99.

Cornell University Library  
ANNUAL STATISTICS 1999/2000 — July 1, 1999 - June 30, 2000

**CISER Data Archive**

Table 17 Resources & Services ..... 19

## CISER DATA ARCHIVE

**TABLE 17: RESOURCES & SERVICES — July 1, 1999 - June 30, 2000**

<u>Resources</u>	<u>Computer Files</u>		<u>TOTAL</u>
	<u>Beg'ng</u>	<u>End</u>	<u>Growth</u>
	<u>of Year</u>	<u>of Year</u>	
Collection Growth	25,908	27,319	1,411
<u>Services</u>			
Reference:	Reference services		296
Materials Use:	In-library materials use		718
	General circulation of materials		321

---

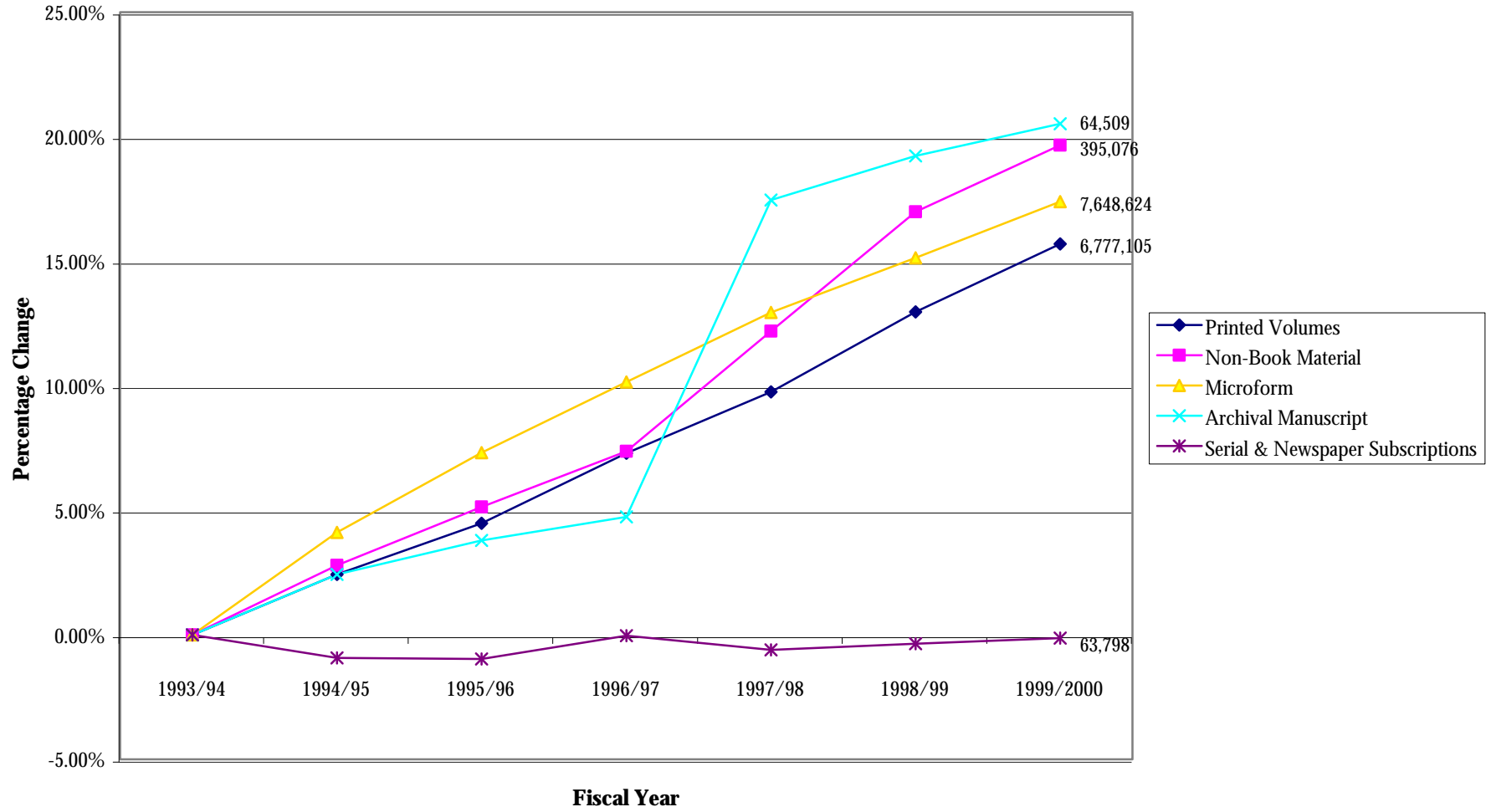
Cornell University Library  
ANNUAL STATISTICS 1999/2000 — July 1, 1999 - June 30, 2000

**Statistical Graphs**

Graph 1	Library Resources .....	20
Graph 2	Library Services .....	21
Graph 3	Library Usage.....	22
Graph 4	Library Cataloging vs. Backlog.....	23

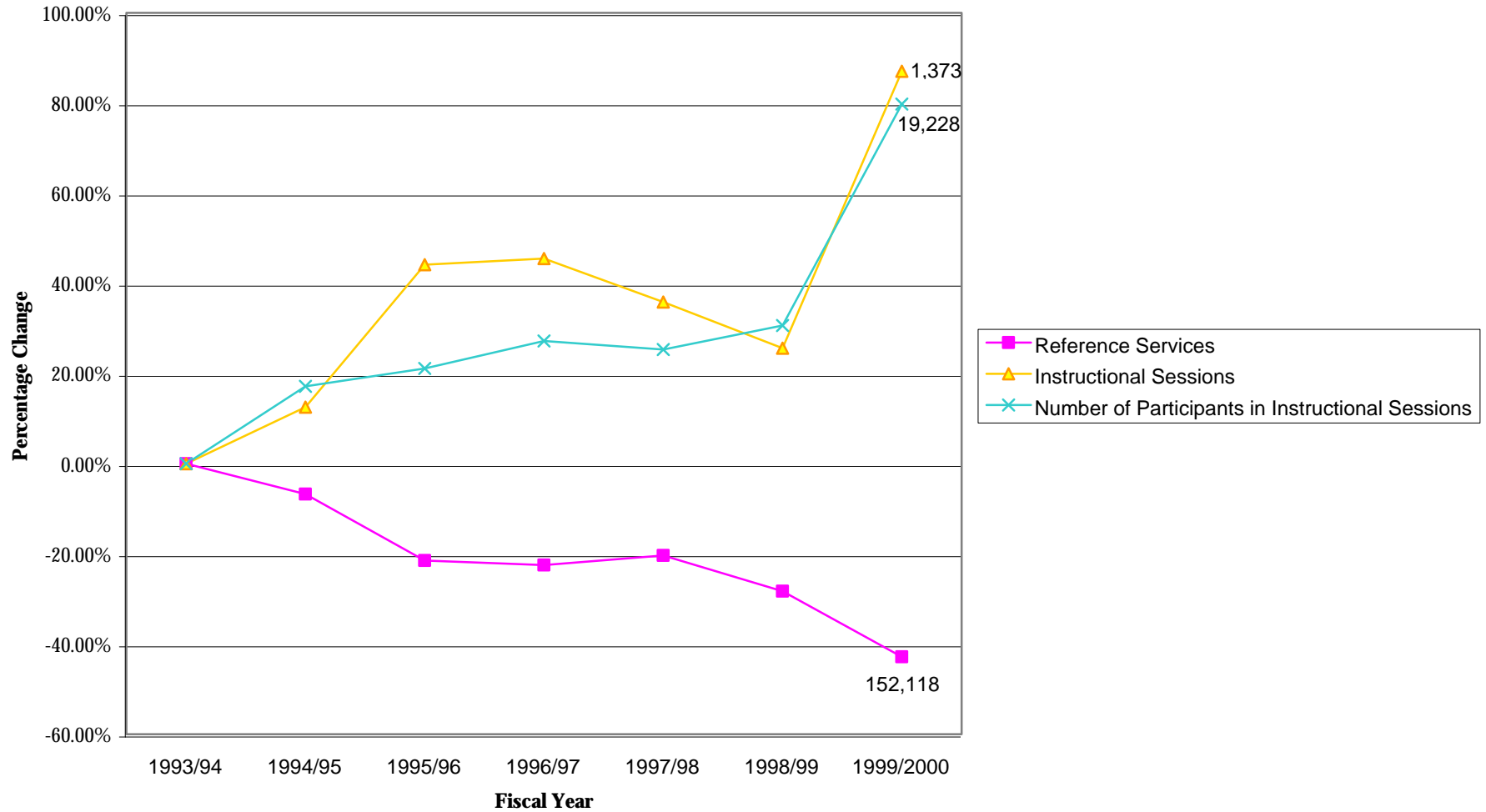
## STATISTICAL GRAPHS

**GRAPH 1: LIBRARY RESOURCES -- Fiscal Years 1993/94 - 1999/2000**



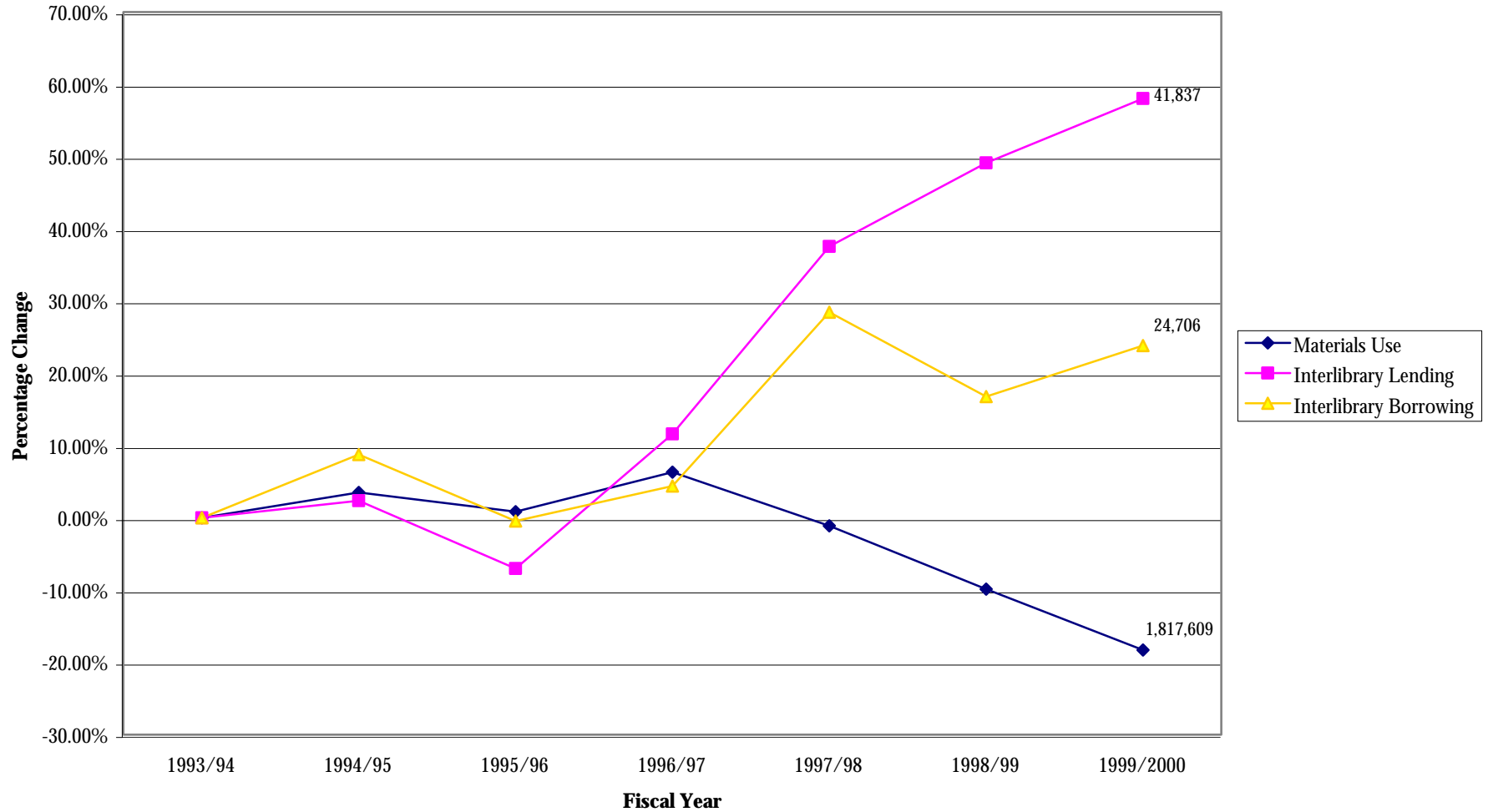
## STATISTICAL GRAPHS

**GRAPH 2: LIBRARY SERVICES -- Fiscal Years 1993/94 - 1999/2000**



# STATISTICAL GRAPHS

## GRAPH 3: LIBRARY USAGE Fiscal Years 1993/94 - 1999/2000



## STATISTICAL GRAPHS

**GRAPH 4: LIBRARY CATALOGING VS. BACKLOG -- Fiscal Years 1993/94 - 1999/2000**

