

Genesee Land Trust

Strategic Conservation Plan - Resources



Cornell University

CRP 689 - Strategic Conservation Planning Workshop, Fall 2007

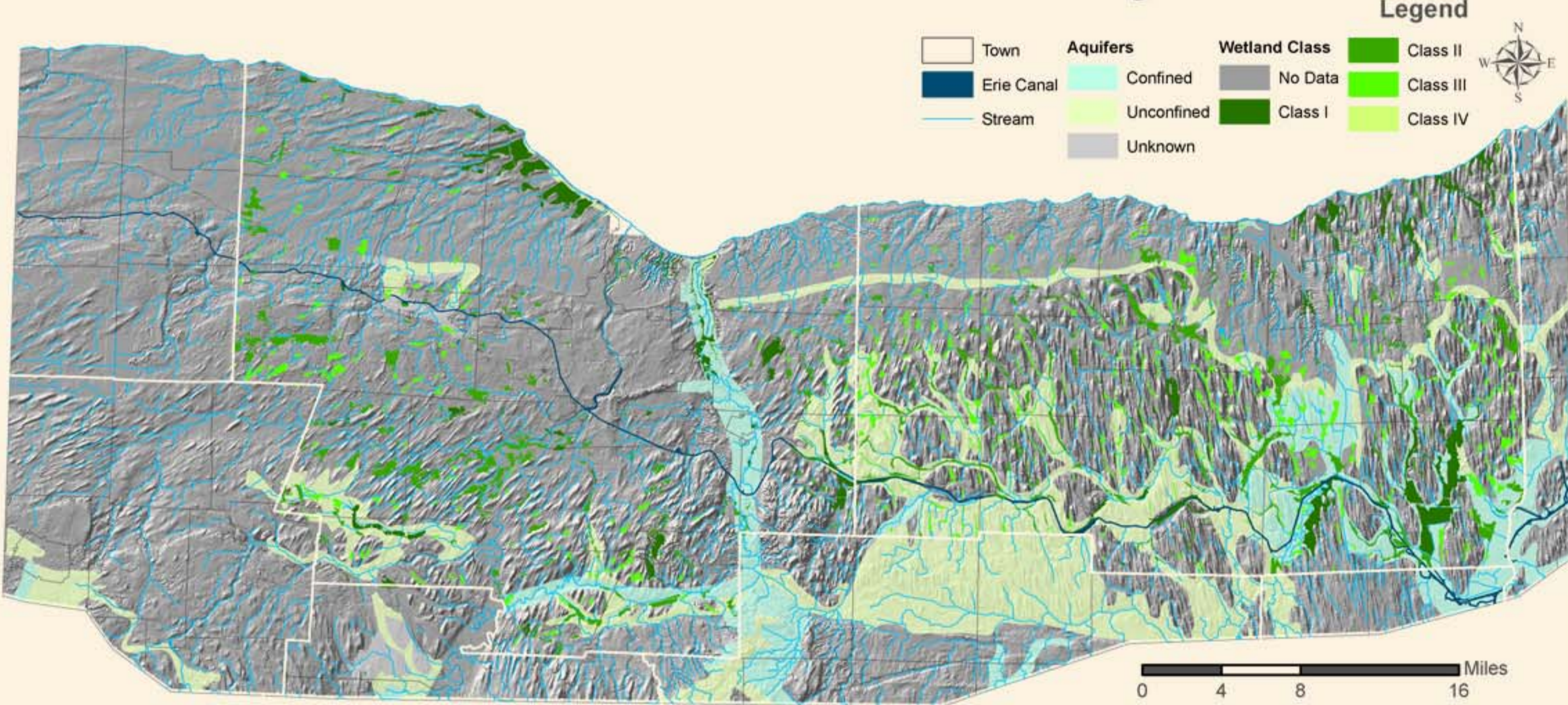
The Genesee Land Trust's (GLT) mission is to preserve and protect lands including waterways, wetlands, farmland, open space, fish and wildlife habitat, and scenic or recreational areas. The Cornell team developed a Conservation Plan to help the GLT to identify conservation resources and become proactive in conservation efforts in their territory. Using Geographic Information Systems (GIS), the Cornell team was able to identify a wide range of natural, scenic, and policy-oriented conservation resources available to the GLT. The Conservation Plan reflects the conservation values of the GLT and will serve as an advisory document for making informed conservation decisions.

Soil Class
Agricultural lands in the GLT Territory benefit from extremely high quality soils. The highest quality soils, or drainage classes I and II, comprise 68% of the GLT lands. The map shows a broad east-west swath of well and moderately drained deep soils oriented to the path of the Erie Canal. As one of the most productive agricultural regions in the country, farmlands in the GLT Territory receive protection from both agricultural districts and tax abatements. There are 443,000 acres of agricultural districts and 241,000 acres of tax abatement lands in Monroe and Wayne Counties.

Soil Classifications in the GLT Territory



Water Resources in the GLT Territory



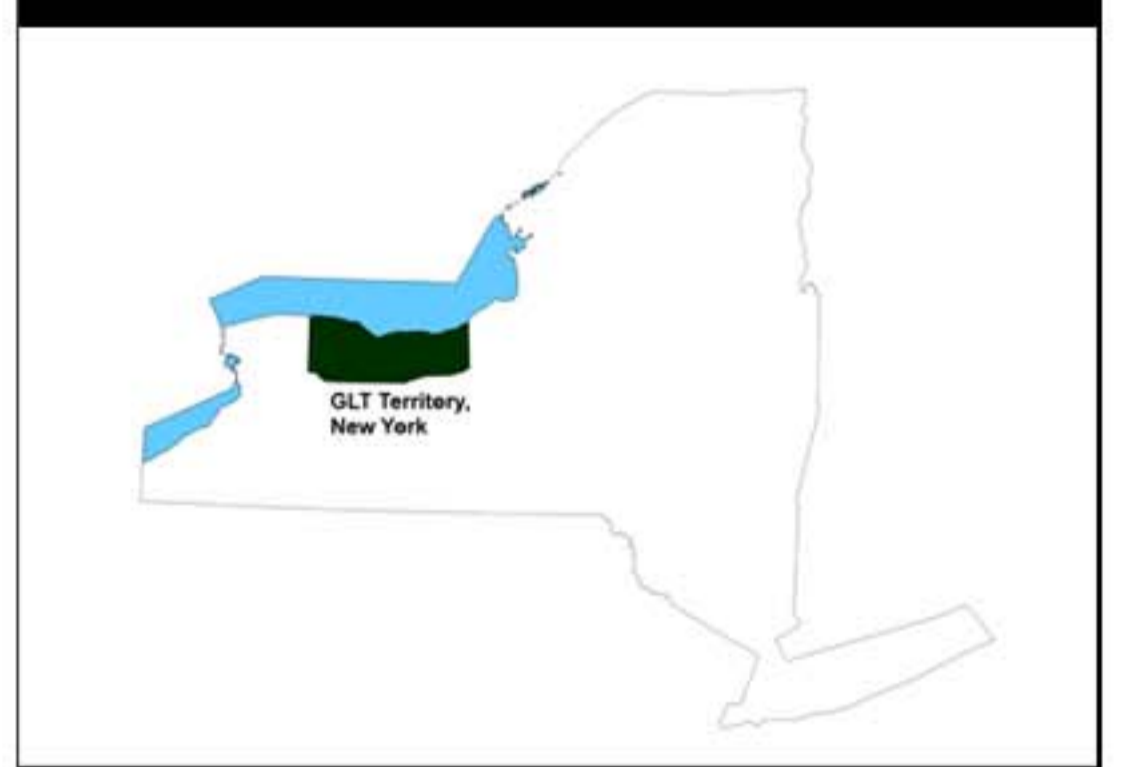
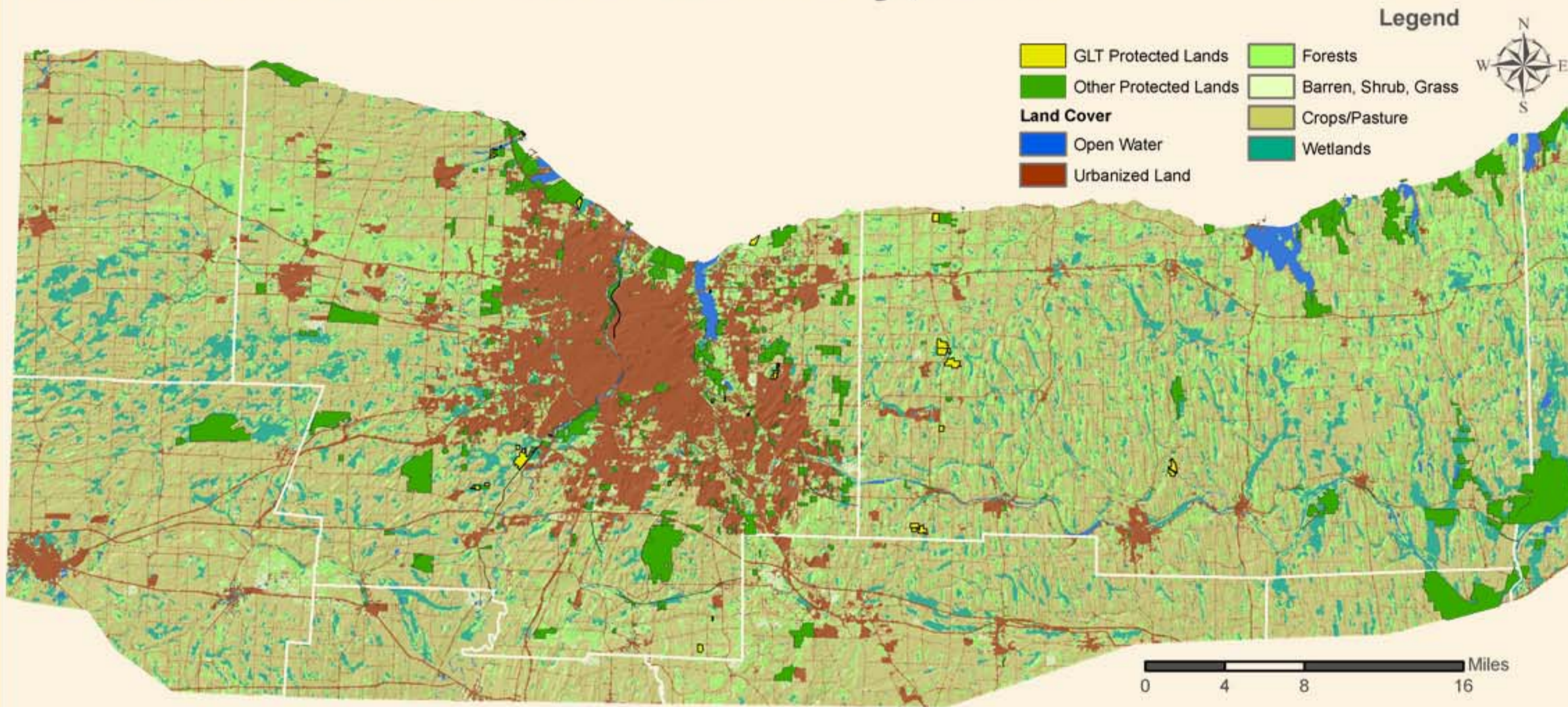
Water Resources

The GLT Territory has a complex network of water resources including aquifers, wetlands, streams, and the Erie Canal. An aquifer is an underground water source, flowing or stationary, residing in permeable rock layers. There are over 2,939 miles of moving water draining into Lake Ontario- one of the world's largest freshwater lakes. Integrated in this system are numerous wetlands classified as "of greatest importance" by the State of New York. Protecting these valuable resources is important for maintaining high water quality and diverse ecosystems.



Land Cover
The 1.3 million acre GLT Territory includes a spectrum of land covers. In 2001, the U.S. Geological Survey created land cover data for Wayne and Monroe Counties using satellite and remote sensing imagery. The land cover data suggests a contrast between land covers in Monroe and Wayne Counties. While over 30% of Monroe County is classified as urban land, only 7% of Wayne County is classified as urban. Furthermore, nearly 50% of Wayne County lands are designated as agricultural. Since large swaths of the GLT Territory are unprotected, many of these diverse landscapes remain threatened. Currently, 45,748 acres of the territory are protected, with the GLT holding 3.5% of those lands.

Land Cover in the GLT Territory, 2001



This project is funded in part by a grant from the New York State Conservation Partnership Program, administered by the Land Trust Alliance Northeast Program with support from the State of New York.

Map Copyright: Copyright Genesee Land Trust 2007
Projection: NAD 1983 UTM Zone 18 N
Maps Units: Meters
Photos: Courtesy of the Cornell team

Faculty Advisor: Ole Amundsen III

Contributors: Meira Hertzberg, Evelyn Israel, Kate McConnell, Andy Sauer, Michelle Striney, Kaustubh Tamaskar, Neha Verma, Krisztian Varsa, Abbie Webb