

CORNELL UNIVERSITY ANNOUNCEMENTS

General Information

1958 - 1959

THE ACADEMIC CALENDAR

| | 1957-1958 | 1958-1959 |
|--|-----------------------|-----------------------|
| Freshman orientation..... | Sept. 20, <i>F</i> | Sept. 19, <i>F</i> |
| Registration, new students..... | Sept. 23, <i>M</i> | Sept. 22, <i>M</i> |
| Registration, old students..... | Sept. 24, <i>T</i> | Sept. 23, <i>T</i> |
| Instruction begins, 1 p.m..... | Sept. 25, <i>W</i> | Sept. 24, <i>W</i> |
| Midterm grades due..... | Nov. 13, <i>W</i> | Nov. 12, <i>W</i> |
| Thanksgiving recess: | | |
| Instruction suspended, 12:50 p.m..... | Nov. 27, <i>W</i> | Nov. 26, <i>W</i> |
| Instruction resumed, 8 a.m..... | Dec. 2, <i>M</i> | Dec. 1, <i>M</i> |
| Christmas recess: | | |
| Instruction suspended, 12:50 p.m..... | Dec. 21, <i>S</i> | Dec. 20, <i>S</i> |
| Instruction resumed, 8 a.m..... | Jan. 6, <i>M</i> | Jan. 5, <i>M</i> |
| Instruction ends..... | Jan. 25, <i>S</i> | Jan. 24, <i>S</i> |
| Second-term registration for students in residence.. | Jan. 27, <i>M</i> | Jan. 26, <i>M</i> |
| Examinations begin..... | Jan. 28, <i>T</i> | Jan. 27, <i>T</i> |
| Examinations end..... | Feb. 5, <i>W</i> | Feb. 4, <i>W</i> |
| Midyear recess..... | Feb. 6-7, <i>Th-F</i> | Feb. 5-6, <i>Th-F</i> |
| Registration: students not in residence in fall term.. | Feb. 8, <i>S</i> | Feb. 7, <i>S</i> |
| Second-term instruction begins..... | Feb. 10, <i>M</i> | Feb. 9, <i>M</i> |
| Midterm grades due..... | Mar. 29, <i>S</i> | Mar. 28, <i>S</i> |
| Spring recess: | | |
| Instruction suspended, 12:50 p.m..... | Mar. 29, <i>S</i> | Mar. 28, <i>S</i> |
| Instruction resumed, 8 a.m..... | Apr. 7, <i>M</i> | Apr. 6, <i>M</i> |
| Instruction ends..... | May 31, <i>S</i> | May 30, <i>S</i> |
| Examinations begin..... | June 2, <i>M</i> | June 1, <i>M</i> |
| Examinations end..... | June 10, <i>T</i> | June 9, <i>T</i> |
| Commencement Day..... | June 16, <i>M</i> | June 15, <i>M</i> |

CORNELL UNIVERSITY ANNOUNCEMENTS

Supplement to Volume 49, Number 1, July 1, 1957

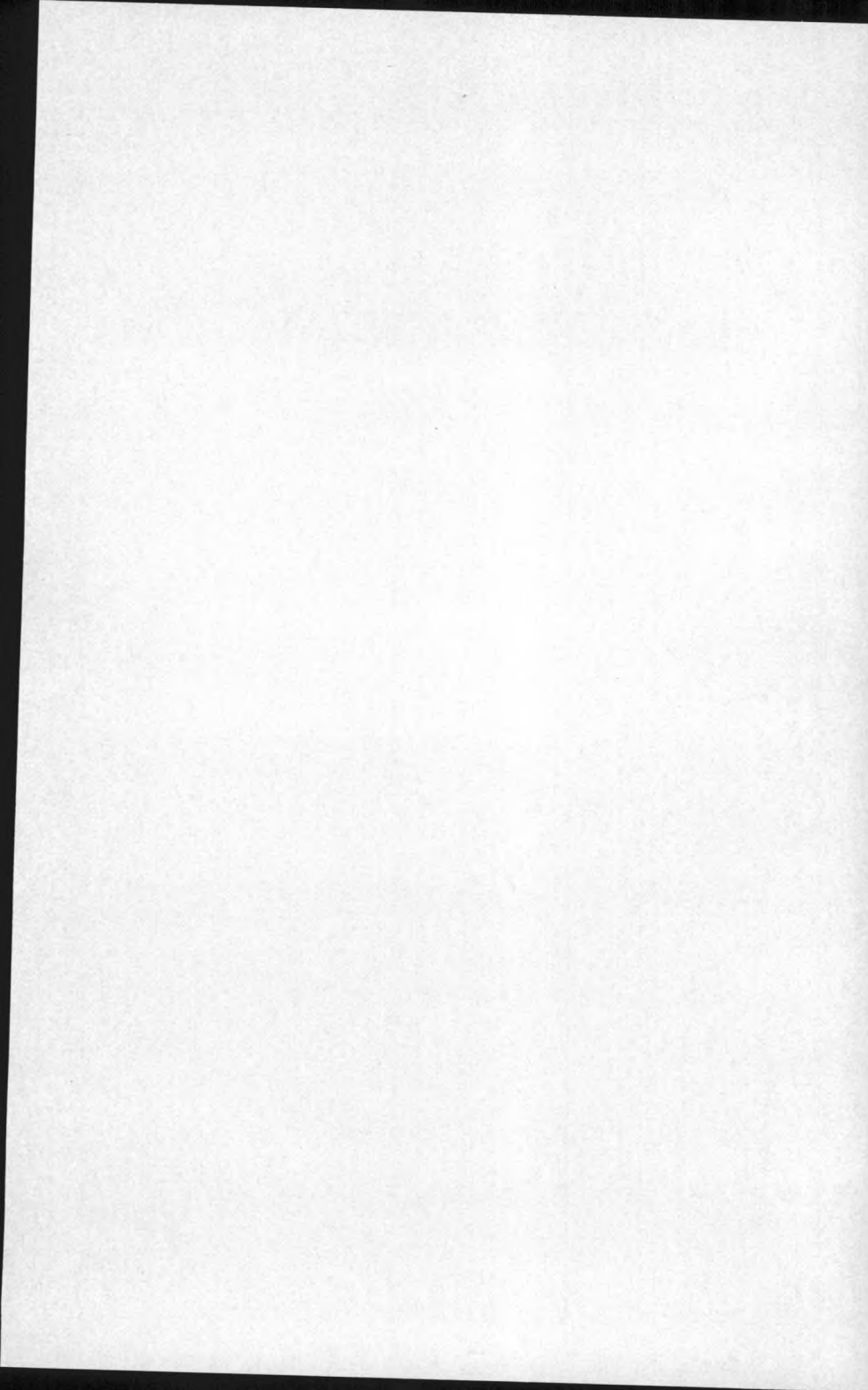
GENERAL INFORMATION

THE BOARD OF TRUSTEES has found it necessary to make certain increases in tuition and fees, effective at the close of the spring term, 1958.

Increase in tuition: \$50 a term. This increase is applicable to all the University's divisions in Ithaca with the following exceptions: tuition for those graduate students whose major field of concentration is in Agriculture, Home Economics, Industrial and Labor Relations, or Veterinary Medicine will remain the same; and tuition in the Extramural Courses will be increased to a total of \$32 a credit hour. For information about tuition in the Graduate School of Nutrition, prospective students should write directly to that School.

Increase in the College and University General Fee: \$25 a term. This increase is applicable to all the University's divisions in Ithaca except for Extramural Courses.

To determine the total amounts of tuition and fees, taking into account the increases, please consult pages 51-56 of *General Information* for July 1, 1957. The rules for payment, as shown on those pages, remain unchanged.



GENERAL INFORMATION

1958-1959

CORNELL UNIVERSITY ANNOUNCEMENTS

Published by Cornell University at Ithaca, New York, every two weeks throughout the calendar year. Volume 49. Number 1. July 1, 1957. Second-class mail privileges authorized at the post office at Ithaca, New York, December 14, 1916, under the act of August 24, 1912.

CONTENTS

| | |
|---|---------------------------|
| Academic Calendar..... | <i>Inside front cover</i> |
| Introduction..... | 3 |
| I The Teaching Divisions of the University..... | 10 |
| II Admission to the University..... | 25 |
| III Orientation..... | 35 |
| IV Counseling Services..... | 35 |
| V Student Housing..... | 36 |
| VI Health Services and Medical Care..... | 38 |
| VII Student Life..... | 46 |
| VIII Military Science and Physical Education..... | 49 |
| IX Expenses at Cornell..... | 51 |
| X Financial Aid and Opportunities for Employment..... | 56 |
| XI Veterans at Cornell..... | 58 |
| XII College Training and Careers..... | 58 |
| Index..... | 64 |
| List of Announcements..... | <i>Inside back cover</i> |

INTRODUCTION

IN A remarkable number of instances, the founders of American universities and colleges have chosen a hilltop as the appropriate site for an institution of higher learning. Ezra Cornell chose the top of an especially impressive hill, for the University that bears his name is on an eminence that rises abruptly for several hundred feet above the southern end of Cayuga Lake. Its towers are a landmark against the sky, visible for miles across the adjoining valleys of the Finger Lakes country of upstate New York.

Three circumstances contributed to the founding of Cornell University in the eventful years that marked the close of the Civil War. In the first place, Ezra Cornell, a citizen of Ithaca, had come into a large fortune from his holdings in the newly formed Western Union Telegraph Company and had devoted a great deal of thought to the good that might be done by giving his wealth to education. A second circumstance was the fact that the State of New York had received a substantial land grant, under the Morrill Act of 1862, for the support of colleges teaching agriculture and the mechanic arts. The third circumstance was that Mr. Cornell had as a colleague in the state legislature of 1864-1865 a young senator named Andrew Dickson White, who had the vision of preserving the state's land grant intact for a single great institution which should teach not only agriculture and the mechanic arts but the humanities and the sciences as well.

Under the fortunate conditions which brought these two men together, it was a natural step to the idea of combining Mr. Cornell's wealth with the federal land grant to build a new university at Ithaca. Through the leadership of Mr. Cornell and Mr. White, the plan for Cornell University took shape in an act eventually passed by the legislature. On April 27, 1865, the charter was signed by the governor of the state, and on October 7, 1868, the University opened its doors to students.

In later years many donors have swelled the endowment so gener-

ously begun by Ezra Cornell. New York State, mindful of Cornell's origin as the land grant University of the state, has added to the endowed divisions of the University four colleges and schools that are supported by annual legislative appropriation. Since the creation of the State University of New York in 1948, these divisions have been units of the State University system. Cornell is thus an unusual combination of endowed and public-supported institutions.

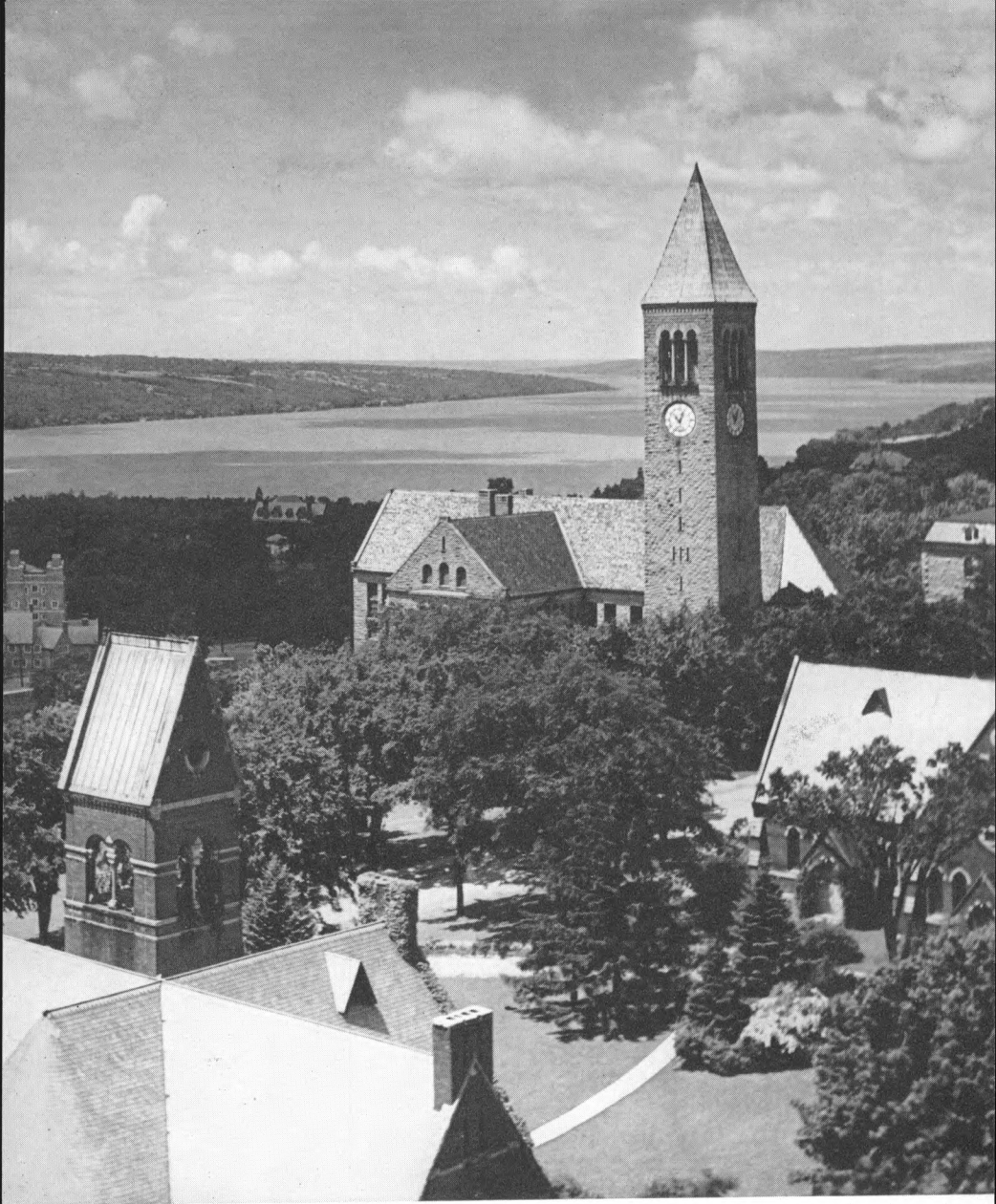
Cornell as it is today, engaged in the numerous and varied activities that make up its teaching and research program, can hardly be described in detail by the present publication. This handbook has been written to set forth briefly the kinds of educational opportunity offered at the University, together with the sort of general information that prospective students ought to have. It is hoped that it will serve as a useful guide in outlining the courses of study here and in indicating other publications where more detailed information may be found. Any of these Announcements, which are listed on the inside back cover, will be mailed without charge.

A word about the size of the University will be helpful in supplementing the illustrative and descriptive material which follows. As has been suggested, Cornell University is a collection of several undergraduate and graduate colleges and divisions. Each one, generally speaking, is housed in its own building or group of buildings and operates with considerable autonomy as to the conduct and direction of its educational programs.

Altogether they represent an enrollment of some 10,300 students, about 600 of whom are studying in the Cornell Medical College and the Cornell-New York Hospital School of Nursing in New York City. Of the 9700 students resident in Ithaca, approximately 1900 are registered in one or another of the graduate divisions. So there are about 7800 undergraduates.

Each of the undergraduate divisions is limited in size, that limit being determined in each case by the physical facilities available for instruction and the number of students who can properly and effectively be taught by the staff. Approximate enrollment in each division is: Architecture, 268; Arts and Sciences, 2656; Engineering, 1854; Hotel Administration, 393; Agriculture, 1501; Home Economics, 602; Industrial and Labor Relations, 292; and Veterinary Medicine, 187.

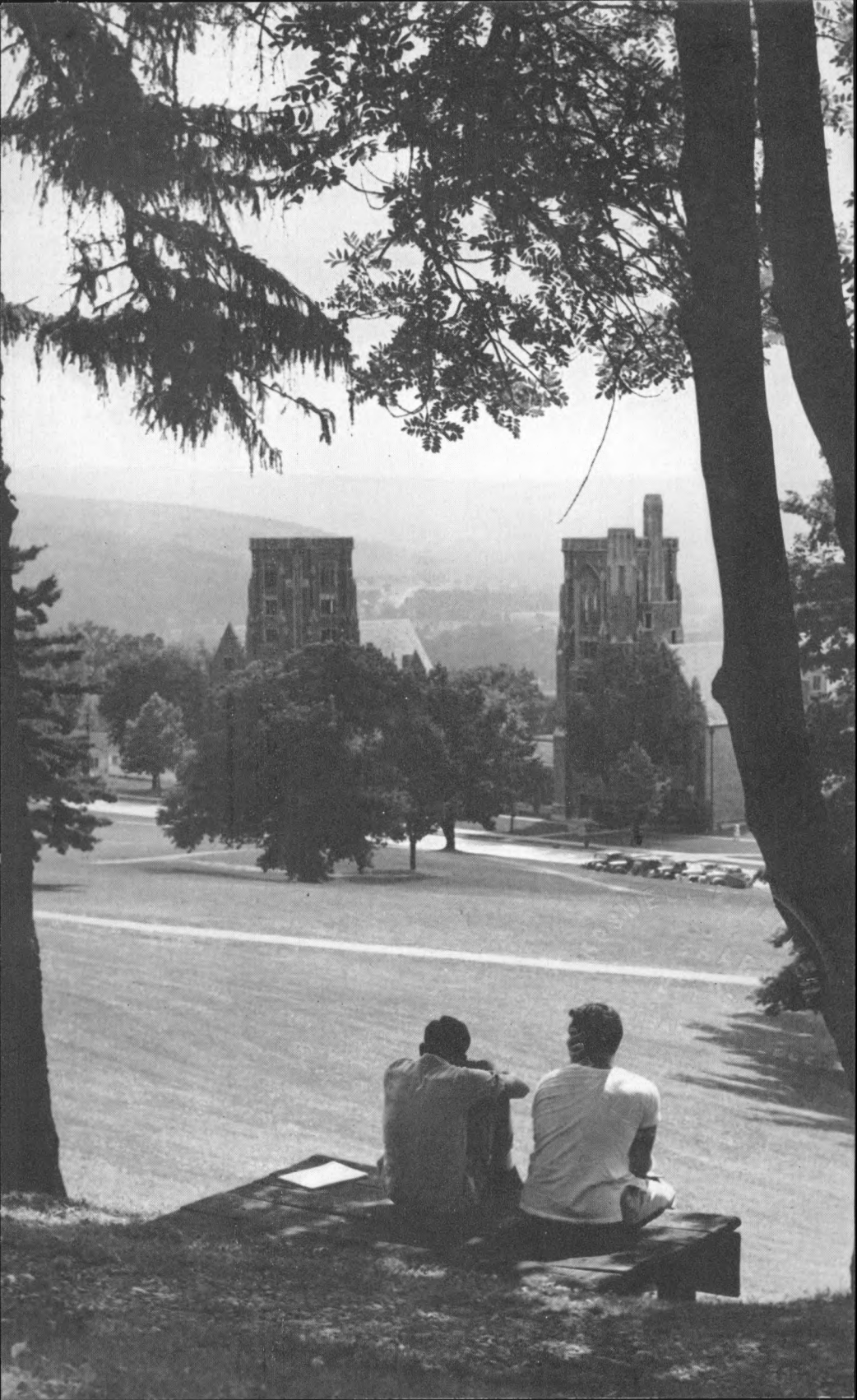
With a spacious campus covering some 480 acres, plus large recreation areas and farm lands, these students are absorbed comfortably.



A KEY TO THE ILLUSTRATIONS

The Library Clock Tower, a familiar landmark against Cayuga Lake.
Willard Straight Hall, student union and center of campus activity.
The Library Slope and the War Memorial dormitory group for men.
Anabel Taylor Hall, housing the University's interfaith program.
The original classroom buildings bordering the lower Quadrangle.









THE TEACHING DIVISIONS OF THE UNIVERSITY

ADMISSION to Cornell involves, in each instance, meeting the entrance requirements to one of the divisions that make up the University. The following paragraphs give general descriptions of the work offered in the various divisions. A separate Announcement, offering complete information about the several courses of study, is published for each division. The prospective student should request the appropriate Announcement after he has determined, from the following material, what division he desires and considers himself qualified to enter.

For convenience, the descriptions have been divided into three groups. The first includes divisions which admit students directly from secondary schools: the New York State College of Agriculture; the endowed Colleges of Architecture, Arts and Sciences, and Engineering; the New York State College of Home Economics; the School of Hotel Administration; and the New York State School of Industrial and Labor Relations. The School of Education is also included, since it supervises curricula beginning in the freshman year, although it does not actually enroll students.

The second group includes colleges and schools which admit students only after some previous college education. The Cornell University-New York Hospital School of Nursing and the New York State Veterinary College require two years; the Law School, the Graduate School of Nutrition, and the Medical College require three years of study in an undergraduate college at Cornell or a baccalaureate degree; the Graduate School of Business and Public Administration requires a baccalaureate degree except in a few specific cases; and the Graduate School requires at least a baccalaureate degree.

In the third group are the Division of Unclassified Students, the Division of Extramural Courses, and the Summer Session.

THE NEW YORK STATE COLLEGE OF AGRICULTURE

The College of Agriculture offers a wide selection of courses emphasizing the basic and agricultural sciences.

The regular undergraduate program covers four academic years and leads to the degree of Bachelor of Science. Students do not follow a prearranged curriculum; instead they select, with the help of a faculty adviser and within broad requirements for the degree, courses that will best prepare them for their objectives. Graduates enter many fields of agricultural business and industry, agricultural and science education in high school and college, agricultural extension, the increasingly complex field of farming, and many specialized fields in which a scientific knowledge of agriculture is useful. The development of modern agriculture finds its basis in the application of science to its processes and problems. Opportunities are equally stimulating and rewarding to those who develop new knowledge through scientific investigation and to those who apply the findings to practical situations and problems. Many graduates continue their studies in graduate or professional schools.

A special five-year program has been arranged in cooperation with the College of Engineering and leads to the degree of Bachelor of Agricultural Engineering.

The various departments of the College offer, through the Graduate School, advanced instruction leading to the degrees of Master of Science and Doctor of Philosophy. Detailed information may be obtained from the Dean of the Graduate School.

The College also provides shorter two-year and adult special programs of college grade but not in themselves leading to a degree. Work completed in these programs may be counted toward the Bachelor of Science degree if the student subsequently enrolls in the four-year course. Short courses not of college grade are offered at irregular intervals to meet the needs of special groups.

Requests for further information about undergraduate work and special or short courses should be addressed to the Secretary of the College of Agriculture, Roberts Hall.

THE COLLEGE OF ARCHITECTURE

The College of Architecture offers undergraduate instruction leading to degrees in the fields of architecture and the fine arts. At the graduate level, instruction is given in architecture, landscape architecture, city and regional planning, and the fine arts (painting and sculpture).

The course of study leading to the degree of Bachelor of Architecture covers five years. It includes training in the basic skills and disciplines needed by the architect for professional competence in his field, together with courses planned to stimulate his creative imagination and to broaden his knowledge of the social and cultural values that must be reflected in contemporary architecture.

The four-year curriculum leading to the degree of Bachelor of Fine Arts provides a general education with the practice of painting or sculpture as the major field of study.

Graduate work in the fine arts is offered to students who have completed their undergraduate training and who have majored in either painting or sculpture. Students preparing themselves for a professional career may enter upon the course of study leading to the degree of Master of Fine Arts, awarded on completion of two years in the Graduate School. For those who wish to become teachers and supervisors of art in the public schools, the College in conjunction with the School of Education offers a one-year course of study leading to the degree of Master of Education.

In the field of city and regional planning, qualified students who hold degrees in architecture, landscape architecture, or engineering, or who have majored in economics, sociology, geography, or government in their undergraduate work, may be accepted in the Graduate School as candidates for the degree of Master of Regional Planning. Two years of graduate study are ordinarily required for the degree.

Requests for further information should be addressed to the Secretary of the College of Architecture, Franklin Hall.

THE COLLEGE OF ARTS AND SCIENCES

The general purpose of the College of Arts and Sciences is liberal and nontechnical. The definition of a liberal college is found in the subjects that make up its curriculum; those which, in the history of

human civilization, have distinguished themselves as the means whereby man has come to understand himself and the world in which he lives. As thus conceived, a liberal education is a special knowledge of some field of human understanding, erected upon a fundamental training in the humanities, the natural sciences, and the social studies.

The College of Arts and Sciences grants the degree of Bachelor of Arts. The requirements of the degree are satisfied normally in four years. Though a large part of a student's course of study is required, he does exercise a wide choice in selecting particular courses, and he has many completely unrestricted electives. The student is expected to accept a large share of responsibility in shaping his own course of study, though at all times he will have the assistance of a faculty adviser and recourse to other sources of advice on the campus in making the most of his educational opportunities.

A student is offered a wide choice of fields of major study: American studies, astronomy, botany, chemistry, Classics, classical civilization, economics, English, Far Eastern studies, fine arts, French linguistics, French literature, geology, German linguistics, German literature, German studies, government, history, Italian literature, literature, mathematics, music, philosophy, physics, psychology, Russian linguistics, sociology and anthropology, Spanish linguistics, Spanish literature, speech and drama, zoology.

Because of the breadth and fundamental nature of its curriculum and the requirement to secure a reasonable mastery of a single field of knowledge, the College of Arts and Sciences provides the basic education for students planning to enter the professions, to continue in graduate study, or to engage at once in the activities of contemporary life. A student may satisfy in his undergraduate years in the College the requirements of the degree of Bachelor of Arts and the entrance requirements of most types of professional schools. A limited number of qualified students may, with the permission of the faculties concerned, register for the senior year both in the College of Arts and Sciences and in one of these other Cornell divisions: the Law School, the Medical College, the Veterinary College.

Students interested in the College of Arts and Sciences should request the *Announcement* of that College. Those interested in graduate study in the liberal arts and sciences should consult the *Announcement of the Graduate School*.

THE NEW YORK STATE COLLEGE OF HOME ECONOMICS

Students in the College of Home Economics receive training in homemaking and in related fields, together with instruction in additional subjects designed to provide a sound general education, and in subjects preparatory to certain professions. The curriculum of the College includes work in child development and family relationships, economics of the household and household management, food and nutrition, housing and design, institution management, textiles and clothing, and home economics education.

The undergraduate course of study in the College may be completed in four academic years and leads to the degree of Bachelor of Science.

Graduate study leading to advanced degrees is offered in all departments. Students who wish to enter one of the advanced programs must qualify for admission to the Graduate School.

Further information may be obtained from the *Announcement of the College of Home Economics*, from the *Announcement of the Graduate School*, and from the office of the Dean of the College, Martha Van Rensselaer Hall.

THE COLLEGE OF ENGINEERING

The need for sound fundamental training for all engineers, whatever their special field of interest, and the need for intellectual development outside the technical sphere, have formed the framework of the five-year undergraduate engineering program at Cornell.

The program has been designed to prevent narrow specialization. Instead, it provides a balanced background of study leading to broad technical competence, to a comprehension of the economic, social, and political forces with which engineers must deal, and to competence in the techniques of management and human relations.

The five-year undergraduate program offers courses in agricultural, chemical, civil, electrical, mechanical, and metallurgical engineering, and engineering physics. Industrial engineering courses are included in the curriculum of the School of Mechanical Engineering. The course in agricultural engineering is offered as a joint

program with the College of Agriculture. The program in aeronautical engineering is at the graduate level and leads to the Master's degree. It may be preceded by a specially arranged undergraduate program in this field.

An elective program in nuclear power technology has been established to supplement the regular course of study in any of the major branches of engineering listed above. Since many nuclear power developments require special applications of mechanical engineering, chemical engineering, electrical engineering, and similar basic fields, the best preparation for work in nuclear power technology consists of a program coordinating the study of the fundamentals of nuclear science and the principles of one of the major branches of engineering. The nuclear power option represents this approach.

An Industrial Cooperative Plan is open to selected undergraduates. Students follow a program which includes the same academic work as that of regular students, with the addition of several "work periods" in cooperating industries. Such students graduate with their regular classes.

Graduate study, leading to the Master's and the Doctor's degrees, is offered by all divisions of the College.

Details of curricula and facilities are carried in the *Announcement of the College of Engineering*, which will be sent on request.

THE SCHOOL OF HOTEL ADMINISTRATION

The purpose of the special program in hotel and restaurant administration is to give a thorough professional training for careers in the hotel, restaurant, hospital, and related fields. The curriculum is designed to fit students for positions of executive responsibility.

Besides general cultural material, the course of study includes foods and food preparation, hotel and restaurant engineering and maintenance, general and specialized hotel accounting, food and beverage control, business administration, personnel management, insurance, real estate management, and advertising. The program is technical in that it requires a concentration of effort in scientific courses necessary for an adequate background in a field where highly skilled personnel must be provided, yet it is sufficiently broad to allow for optional courses that are of value to those who are looking

to positions of leadership. The course of study covers four academic years and leads to the degree of Bachelor of Science.

Students receive practical training through the operation of Statler Hall, a practice hotel on the University campus, including rooms for transient guests, a banquet hall, restaurant, and cafeteria.

Requests for further information should be addressed to the School of Hotel Administration, Statler Hall.

THE NEW YORK STATE SCHOOL OF INDUSTRIAL AND LABOR RELATIONS

The School of Industrial and Labor Relations offers a comprehensive program of professional training at the undergraduate and graduate levels in the field of industrial and labor relations.

The four-year course of study leads to the degree of Bachelor of Science. Courses in the first and second years of the undergraduate program give the student background in the social sciences and in the techniques of analysis and expression. In the third and fourth years, courses directly concerned with labor-management relations and related fields are emphasized. In addition, the School offers graduate work in industrial and labor relations leading to the Master's and the Doctor's degrees. Graduate instruction is also offered in the field of industrial education. For details concerning graduate work, consult the *Announcement of the Graduate School*.

Requests for further information should be addressed to the Director, Resident Instruction, School of Industrial and Labor Relations.

THE SCHOOL OF EDUCATION

The School of Education is composed of the departments and divisions of education in the various colleges of the University. The resources of all the colleges that can contribute either to the general or professional education of teachers are utilized.

Through its School of Education, Cornell University offers a variety of programs for those who wish to prepare for, or those who are already engaged in, the teaching profession.

The person who has determined at the time of entrance at the undergraduate level that he wishes to teach, or who so decides early in his undergraduate career, may shape his program of study accordingly. Programs designed to prepare for teaching in junior and senior high schools are available.

A student may delay the decision to prepare for teaching until after the award of a Bachelor of Arts or Bachelor of Science degree. If then he decides he would like to become a teacher and presents appropriate qualifications, he may enter the Graduate School and prepare for elementary, secondary, or college teaching.

An experienced teacher who desires to do more advanced work and to qualify for college teaching, school administration, or specialized services in schools, may become a candidate for a Master's degree or for a Doctor of Philosophy or Doctor of Education degree. The nature of the program for this graduate work and the requirements for admission are discussed in the *Announcement of the School of Education*. Requests for further information should be addressed to the Dean of the School of Education, Stone Hall.

THE NEW YORK STATE VETERINARY COLLEGE

The primary purpose of the Veterinary College is to educate young men for the veterinary profession. The course, which requires four academic years, leads to the degree of Doctor of Veterinary Medicine. This degree makes its holder eligible to take the licensing examination in any state or territory of the United States; it is also recognized in many foreign countries.

Work at the graduate level, leading to the degrees of Master of Science, Doctor of Science in Veterinary Medicine, and Doctor of Philosophy, is offered for graduates who want additional training in a specialty, or who plan to go into teaching or research. It is conducted in accordance with the regulations of the Graduate School.

Requirements for admission to the College include two years of college work with credits in several specified subjects. The farm practice requirement must also be met. Those interested in applying for admission should request a copy of the *Announcement of the New York State Veterinary College*.

THE LAW SCHOOL

The primary function of the Law School is to prepare, for both public and private practice, attorneys who are equipped to render skillful professional service and who are thoroughly conscious of the important role played by the law as a means of social control. The curriculum is designed to prepare students for admission to the bar in all American states and territories.

Students who are admitted to the Law School must have a Bachelor's degree from an approved college or university. Exceptions are made in the case of students in the College of Arts and Sciences at Cornell, who are allowed in their senior year to elect the first year of the course in law, and in the case of students in the College of Engineering, who are allowed in their fifth year of engineering to elect courses in the Law School, subject in either case to the approval of both divisions.*

The course of study leading to the degree of Bachelor of Laws covers three academic years. A limited number of students will be admitted to a program of study leading to the degree of Bachelor of Laws with specialization in international affairs. Study at the graduate level, leading to the degrees of Master of Laws and Doctor of the Science of Law, is conducted in the Graduate School under the direction of the Division of Law. Candidacy for the degree of Master of Laws is open to those who have earned the degree of Bachelor of Laws and who have decided upon a specialty. Work leading to the degree of Doctor of the Science of Law is planned mainly for those who wish to teach law and who have already received a Bachelor of Laws degree.

Requests for further information should be addressed to the Law School, Myron Taylor Hall, for the attention of the Director of Admissions of that School.

*The faculties of the Law School and of the School of Business and Public Administration at Cornell have developed a program for combining a law school education with training in either business or public administration, according to a student's election, and leading to the completion of work in the two fields and the award of two degrees in four rather than five years.

Applicants for admission to this combined program must be approved for admission to both Schools. The work of the first year will be entirely in the School of Business and Public Administration; the second year will be devoted entirely to the Law School program for beginning law students; the work of the third year will be divided between the two Schools and will complete the requirements for the award of M.B.A. or M.P.A. at the end of that third year; and the work of the fourth year will be devoted entirely to Law School studies and will qualify the student for the LL.B. degree at the end of that year.

THE CORNELL UNIVERSITY-NEW YORK HOSPITAL SCHOOL OF NURSING

The School of Nursing, like the Medical College, is in New York City at the New York Hospital-Cornell Medical Center. The program offers to carefully selected young women a preparation in nursing which qualifies them for professional practice in public health agencies, hospitals, and other community health services. Unlimited opportunities for participation in vital health services at home and abroad are open to graduates.

Requirements for admission to the School include two years of general college work in an accredited college or university. These two years may be taken in any university, college, or junior college accredited by one of the regional associations of colleges and secondary schools, including the College of Arts and Sciences, the College of Home Economics, and the College of Agriculture in Cornell University at Ithaca.

The course of study in the School of Nursing is two years and eight months in length and leads to the degree of Bachelor of Science in Nursing.

Requests for further information should be addressed to the Dean of the Cornell University-New York Hospital School of Nursing, 1320 York Avenue, New York 21, N.Y.

THE GRADUATE SCHOOL OF NUTRITION

The aim of the Graduate School of Nutrition is to provide thorough training in the sciences basic to the field of food and nutrition. It is designed to furnish a broad training program which includes the practical application of these basic principles in both human and animal nutrition and in the fields of food processing, distribution, and preparation for use.

To be admitted to the School the applicant must hold a baccalaureate degree from a college or university of recognized standing. Applicants admitted to the School usually become candidates for the Master of Nutritional Science or Master of Food Science degree. Admission in noncandidate status is open to applicants who desire to register for a term or more to take specific courses but who do not wish to become candidates for a degree.

Requests for further information should be addressed to the Secretary of the Graduate School of Nutrition, Savage Hall.

THE MEDICAL COLLEGE

The Cornell University Medical College is in New York City and is associated with The New York Hospital in The New York Hospital-Cornell Medical Center. This Center includes the Hospital for Special Surgery and the Cornell University-New York Hospital School of Nursing. Included also in an effective union with the Medical College for teaching and research is the Memorial Center for Cancer and Allied Diseases, consisting of the Memorial Hospital, the Sloan-Kettering Institute for Cancer Research, and the James Ewing Hospital of New York City for the care of medically indigent cancer patients. This neighboring center is closely associated with Cornell University by the establishment of a graduate division of the Medical College known as the Sloan-Kettering Division of Cornell University Medical College.

The curriculum of the Medical College leads to the degree of Doctor of Medicine and qualifies graduates for licensing examinations in all states and territories of the United States. The course of study covers four academic years.

Applicants for admission to the Medical College must be graduates of approved colleges or scientific schools, or seniors in good standing in approved colleges or scientific schools which permit their students to substitute the first year in Cornell University Medical College for the fourth year of the college course and will confer upon them the baccalaureate degree upon the satisfactory completion of the first year's work in medicine.

Graduate study, leading to the degree of Master of Science and the degree of Doctor of Philosophy, is offered to a limited number of well qualified students who can satisfy the requirements for admis-

sion to the Graduate School of Cornell University and who wish to study in the fields of anatomy, microbiology and immunology, biochemistry, pathology, physiology, or public health and preventive medicine.

Requests for additional information should be addressed to the Associate Dean, Cornell University Medical College, 1300 York Avenue, New York 21, N.Y.

THE GRADUATE SCHOOL OF BUSINESS AND PUBLIC ADMINISTRATION

The Graduate School of Business and Public Administration offers professional education for men and women desiring careers in private business and the public service. Business and public administration are taught in an integrated combination, with opportunity for emphasis in either the public or private aspect of administration. It is the School's experience that this program provides for an unusually fundamental understanding of the processes of management.

With the few exceptions outlined in the Announcement of the School, a Bachelor's degree is required for admission to the two-year program leading to the Master of Business Administration or Master of Public Administration degree.

After completing the general program required of all students, Master's degree candidates may specialize in one of the following concentrations: accounting, agricultural management, business management, city management, finance, hospital administration, marketing, managerial economics, personnel, production, public management (with general public administration, federal administration, and international and foreign operations options), or transportation. Emphasis throughout is on the case method of instruction. In appropriate cases, a student may be permitted to undertake a special concentration such as resources management, public utilities, or economic and business history.

The School has also instituted a number of cooperative programs which permit qualified students to utilize its resources in combination with those of other Cornell schools and colleges. Such programs are in operation at present in collaboration with the Colleges

of Agriculture, Architecture, and Engineering, and with the Law School. Details will be found in the Announcement.

The Doctor of Philosophy program provides an advanced and comprehensive education in administration, primarily for those who seek careers in teaching or research. Candidates must meet the entrance requirements of the Graduate School.

Requests for further information should be directed to the Administrative Aide, Graduate School of Business and Public Administration, McGraw Hall.

THE GRADUATE SCHOOL

The Graduate School offers facilities for advanced study and research to mature students who wish to become scholars in the large meaning of the term. As members of the Graduate School, these students may obtain a comprehensive view of a field of knowledge and receive the training required for independence in that field.

Graduate study is necessarily a highly individual process. The transmission of scholarly enthusiasm and independence from one generation of scholars to another is not assured by a system of regulations and requirements. The faculty regards a person-to-person relationship between the student and his Special Committee or adviser as the best way for the student to reach scholarly maturity. In consequence, the faculty makes no specific requirements for the advanced general degrees of Master of Arts, Master of Science, and Doctor of Philosophy, but only such general requirements as govern the relationships which, in its considered judgment, best accomplish the aim of graduate study: a period of study in residence, the mastery of some one subject, adequate acquaintance with allied subjects, presentation of a satisfactory thesis, and a final examination.

The Graduate faculty, as a unit, exercises sole jurisdiction over the advanced *general* degrees. It also has jurisdiction over many of the professional degrees offered by the University. Students who may wish to use the facilities of the University for intensive specialized training but who are not interested in advanced degrees may be admitted as noncandidates under the general supervision of the Graduate School. Information concerning qualifications for admission and the courses of study for professional degrees may be obtained from the separate colleges of the University administering these degrees.

To be admitted to the Graduate School an applicant must (1) hold a baccalaureate degree from a college or university of recognized standing or have had work equivalent to that required for such a degree; (2) show promise, as judged by his previous record, of ability satisfactorily to pursue advanced study and research; and (3) have had adequate preparation to enter graduate study in the field chosen.

Inquiries about admission should be addressed to the Dean of the Graduate School, Edmund Ezra Day Hall. Inquiries regarding facilities for advanced study and research in a given field and special requirements for such study and research should be addressed to a member of the faculty supervising work in the particular field (see the *Announcement of the Graduate School*).

THE DIVISION OF EXTRAMURAL COURSES

Through its Division of Extramural Courses, Cornell University offers courses for nonresident students interested in part-time study. These include (a) courses made available in off-campus centers, located to suit the convenience of a sufficient number of students to warrant the offering, and (b) regular on-campus courses scheduled for the convenience of students who can commute to the campus. All such courses carry regular credit which may be used toward meeting requirements for graduate and, in some cases, undergraduate degrees, or for such nondegree purposes as certification for employment or other purposes involving college credit.

In making its facilities available in this manner, the University seeks to serve those persons who are employed in the professions, in industry, in public service, and otherwise, whose available time makes impossible a full-time resident registration but who, nevertheless, desire to add to their qualifications and training either in vocation or avocation. Students are admitted to courses on the basis of their preparation to do the work required in each specific course.

Requests for additional information should be addressed to the Director of the Division of Extramural Courses, Stone Hall.

THE DIVISION OF UNCLASSIFIED STUDENTS

The Division of Unclassified Students assists in redirecting the able Cornell student whose basic interests and aptitudes lie outside the division in which he originally enrolled. Any student who has been in residence for a degree in any college or school of the University may apply for admission. The Division's office is in Edmund Ezra Day Hall.

THE SUMMER SESSION

The Summer Session offers courses for both graduates and undergraduates given by members of the faculties of most of the schools and colleges of the University.

Undergraduate courses are equivalent to required and elective collegiate courses leading to the Bachelor's degree. Advanced courses, seminars, and informal study, treating topics of concern to students with special interests, are designed with particular regard for what can satisfactorily be treated in a short term and in the summer. Though some courses may be in operation at any time from Commencement Day to the day of fall registration, the regular Session extends six weeks from the first Monday in July. All the necessary facilities of the University are available to students registered in the Summer Session.

A special application must be filed for admission to the Summer Session. Such applications, as well as other correspondence regarding this division of the University, should be addressed to the Director of the Summer Session, 117 Edmund Ezra Day Hall.

II

ADMISSION TO THE UNIVERSITY

THE FIRST step toward entering an undergraduate college or school is to write to the Director of Admissions, whose office is in Edmund Ezra Day Hall, for an application blank. Correspondence regarding entrance to the Graduate School, the Law School, the Medical College, the School of Nursing, the Graduate School of Nutrition, the Graduate School of Business and Public Administration, and the Graduate School of Aeronautical Engineering should be addressed to the heads of those divisions.

GENERAL ADMISSIONS POLICY

Cornell University welcomes applications for admission from all those who are interested in studying at Cornell regardless of race, religion, creed, or nationality. Selection of students is not governed in any way by those factors.

The University's colleges and schools include eight offering instruction at the undergraduate level: the Colleges of Agriculture, Architecture, Arts and Sciences, Engineering, and Home Economics; the Veterinary College; and the Schools of Hotel Administration and Industrial and Labor Relations. Each of these divisions is limited in the number of students who can be accommodated. The number of applicants with minimum qualifications generally exceeds the number who can be admitted, thus creating a highly competitive situation among candidates. Those are selected each year who, in competition with all others seeking admission at the same time, have best demonstrated by their superior qualifications that they deserve acceptance. It should be clearly understood that each candidate is a competitor only with those seeking entrance to the same division of the University, and that the professional divisions in particular must restrict their selections to those who, meeting all

other qualifications, appear well fitted for the particular field of work to which the course of study is directed.

The selection of the proper college course is therefore most important. A choice should be made only after careful thought, investigation, and consultation with those familiar with the candidate's abilities and interests. Secondary school advisers should be consulted. The Office of Admissions is always ready to help prospective applicants in this manner.

SCHOLARSHIP. . . . As an educational institution, Cornell University is devoted primarily to the intellectual development of its student body. Those selected for admission must have demonstrated, without question, through their previous schooling, the intellectual capacity to carry the classroom work and to profit from the instruction offered in the division of the University to which application is made. Intellectual preparedness for study at Cornell is judged by the candidate's whole secondary school record, the recommendations of his school principal, and in the case of most divisions, the Scholastic Aptitude Test of the College Entrance Examination Board.

EXTRACURRICULAR ACTIVITIES. . . . To supplement but not replace the basic requirement of demonstrated intellectual capability, evidence of the candidate's ability to make effective use of his time is an important consideration. This factor is judged by the character and quality of the student's participation in the extracurricular activities associated with his school and his community and the use he has made of summer vacations. Work experience which is related to the candidate's educational objective is particularly valuable.

CHARACTER AND PERSONALITY. . . . The intangible but important factors which go to make up a person of good character, personal integrity, and effective personality receive full consideration by the Selection Committee. Capacity for leadership and concern for others receive due weight. These factors are usually judged by the principal's report and references submitted on behalf of the candidate. Several divisions of the University require personal interviews at specified times. In all cases candidates will be given ample notice if and when an interview is desired.

GEOGRAPHICAL DISTRIBUTION. . . . Cornell University draws its students from all parts of the world and from all walks of life.

The University is proud of the cosmopolitan and democratic make-up of its student body, believes in the educational values inherent in bringing to the campus persons of widely different backgrounds, and directs its admissions policy to the preservation of this fundamental characteristic.

The New York State-supported divisions of Agriculture, Home Economics, Industrial and Labor Relations, and Veterinary Medicine recognize these same values within their student bodies and encourage applications from well-qualified out-of-state students. The bulk of their candidates will, however, be selected from among applicants resident in New York State.

The endowed divisions—Arts and Sciences, Architecture, Engineering, and Hotel Administration—impose no restrictions as to residence. In choosing from among candidates of approximately equal qualifications, some preference may be given to those whose homes are in areas not adequately represented in the student body.

CHILDREN OF ALUMNI...The University is eager to include in the student body the children of its alumni who are qualified for admission. In choosing between candidates of approximately equal qualifications, including scholarship, extracurricular activities, character, and personality, as described above, the son or daughter of an alumnus will have preference.

WOMEN STUDENTS...The total number of women students at Cornell is fixed by the extent of the facilities provided by the University for the housing of women students. Present facilities are such that the number of women admitted each year must be very definitely restricted, with the result that competition for admission is especially severe for this group of applicants.

ADMISSION OF FRESHMEN

A candidate for admission as a freshman must satisfactorily complete secondary school subjects carrying a value of sixteen entrance units. The subjects in which these units may be offered, the number of units that may be credited in each subject, and the units required in specific subjects by the several divisions of the University are listed in detail on pages 29-33. These should be carefully studied by every prospective student.

To enter Cornell, a student must be at least sixteen years old and have a satisfactory knowledge of the subjects required for admission. This may be demonstrated in one or more of the following ways: by presenting acceptable ratings in the tests given by the College Entrance Examination Board; by passing, at a satisfactory level, if he has prepared for college in New York State, the appropriate State Regents Examinations; or by presenting an acceptable school record.

THE COLLEGE BOARD TESTS. . . . The College Entrance Examination Board offers a program of achievement tests four times a year at centers throughout the United States. These are subject matter tests and may be used to satisfy entrance unit credit in the subject examined. Applicants who plan to take the tests may obtain a descriptive bulletin listing the places and times they are given by writing to the College Entrance Examination Board, Box 592, Princeton, New Jersey.

The Board's Scholastic Aptitude Test must be taken, in January of the year in which admission is desired, by all candidates for admission to the College of Architecture, the College of Arts and Sciences, the College of Engineering, the College of Home Economics, and the School of Hotel Administration. It is also required of candidates for admission to the School of Industrial and Labor Relations who do not offer the New York State Regents Examinations and of any other candidate for admission who may be so advised by the Committee on Admissions.

THE REGENTS EXAMINATIONS. . . . These examinations prepared by the New York State Education Department are particularly desired of applicants from New York State who are candidates for admission to the College of Agriculture or the School of Industrial and Labor Relations. They are useful in the evaluation of candidates for the other divisions as well.

THE SECONDARY SCHOOL RECORD. . . . A transcript of work done in a public or private school may be offered in place of College Board tests or Regents Examinations, provided the applicant has completed a regular course of study and has been graduated after at least one year in the school. Credit for entrance will be granted only in those subjects in which the candidate attains the college-recommending mark of the school, except in a sequence course such as English or a language, in which case credit for the full sequence will depend only upon attaining the college-recommending mark of the

school in the final year of the sequence. Failure to reach the recommending mark in a subject may be overcome by repetition of the course, or by completing the appropriate College Entrance Examination Board test at a satisfactory level.

Candidates are urged to correspond with the Office of Admissions as early as possible with respect to the correction of weaknesses in their school records.

THE TIME FOR APPLYING. . . Applications for admission must be received at the University in ample time to allow for assembling credentials, completing required tests, and reviewing by the Committee on Admissions. Secondary school students should, if possible, initiate their applications in the fall of the year preceding matriculation in college. Applicants for admission to the College of Home Economics should, like other applicants, apply early; but in no case will the College consider an application received later than March 1 for fall entrance. The review of applications for all divisions of the University will begin not later than the first of March.

Candidates for admission who also desire financial assistance, including scholarship aid, should note carefully the section on financial aid and part-time employment, pages 56-57. A separate scholarship application is required and should be filed by February 15.

SUBJECT REQUIREMENTS APPLICATION DATES

AGRICULTURE, B.S., 4 years.

Application should reach Cornell by April 1.

Sixteen units representing completion of a secondary school course which must include English, 4 units; and mathematics, 2 units.

The College may admit those applicants who hold the New York State Vocational Diploma in Agriculture, with the proviso that 2 units in mathematics are included.

The schedule for receiving applications in the College of Agriculture is influenced somewhat by the number and quality of applications received. It is likely that no applications will be accepted after June 1 and certain that those received after April 1, the due date, will be at a disadvantage.

Special two-year courses are also available in the College. For details consult the Announcement of those courses.

For the five-year course leading to the degree of Bachelor of Agricultural Engineering, candidates must meet the entrance requirements for engineering (listed below) as well as those for agriculture.

ARCHITECTURE, B.ARCH., 5 years. B.F.A., 4 years.

Application should reach Cornell by March 1.

Sixteen units, including English, 4 units; one foreign language, 3 units (or 2 years in each of two foreign languages, 4 units), or, in certain cases, history, 3 units, or science, 3 units, may be substituted; elementary and intermediate algebra, 2 units; plane geometry, 1 unit; solid geometry, $\frac{1}{2}$ unit; trigonometry, $\frac{1}{2}$ unit; and physics, 1 unit.

Fine Arts requirements are the same as in Arts and Sciences.

ARTS AND SCIENCES, A.B., 4 years.

Application should reach Cornell by March 1.

Sixteen units, including English, 4 units; and elementary and intermediate algebra, 2 units. The remaining units should, in the main, be made up of foreign language (ancient or modern), science, and social studies (including history).

ENGINEERING, B.C.E., B.M.E., B.MET.E., B.E.E., B.C.H.E., B.ENG.PHYS., B.AGR.E., all 5 years.

Application should reach Cornell by March 1.

Sixteen units including English, 4 units; one foreign language, 2 units, or history, 2 units; elementary and intermediate algebra, 2 units; plane geometry, 1 unit; trigonometry, $\frac{1}{2}$ unit; either advanced algebra, $\frac{1}{2}$ unit, or solid geometry, $\frac{1}{2}$ unit; chemistry, 1 unit, or physics, 1 unit. It is recommended that the candidate offer advanced algebra, if possible, and that at least three of the elective units offered be in language or history. Chemistry is required for entrance to the courses in chemical engineering and metallurgical engineering.

HOME ECONOMICS, B.S., 4 years.

Application should reach Cornell by March 1. No late applications can be considered.

Sixteen units, which should, in the main, be made up of English, 4 units; foreign language (ancient or modern), mathematics, science, and social studies (including history).

Candidates will be considered for admission only if they achieve *two* of the following in their secondary school work: (1) a high school average of at least 85 per cent at the end of the seventh semester of the high school course; (2) a scholastic rating in the upper two-fifths of the graduating class at the end of the seventh semester; (3) a score at the median or above on the verbal section of the Scholastic Aptitude Test of the College Entrance Examination Board.

HOTEL ADMINISTRATION, B.S., 4 years.

Application should reach Cornell by March 1.

Sixteen units, which must include English, 4 units, and mathematics, 2 units.

INDUSTRIAL AND LABOR RELATIONS, B.S., 4 years.

Application should reach Cornell by March 1.

Sixteen units, which should, in the main, be made up of English, 4 units; foreign language (ancient or modern), mathematics, science, and social studies (including history).

VETERINARY MEDICINE, D.V.M.

Application should reach Cornell by March 1.

Two years of study in a registered college of liberal arts and sciences or its equivalent are required for entrance. At Cornell this pre-Veterinary work may be taken within the first two years of either Arts and Sciences or the four-year Agriculture course. The requirement *cannot* be met in the special two-year course in Agriculture. See *Announcement of the New York State Veterinary College.*

COLLEGE BOARD TEST REQUIREMENTS

(1) *FRESHMAN CANDIDATES*

(a) Architecture, Arts and Sciences, Engineering (including Agricultural Engineering), Home Economics, Hotel Administration: SCHOLASTIC APTITUDE TEST required.

(b) Industrial and Labor Relations: SCHOLASTIC APTITUDE TEST required for out of state candidates and recommended for others.

(c) Agriculture: SCHOLASTIC APTITUDE TEST recommended but not required (except for Agricultural Engineering) for candidates not offering New York State Regents Examinations.

(2) *ADVANCED STANDING (TRANSFER) CANDIDATES*

(a) Arts and Sciences, Home Economics, Hotel Administration: SCHOLASTIC APTITUDE TEST required.

(b) Architecture, Engineering: SCHOLASTIC APTITUDE TEST recommended but not required.

(c) Industrial and Labor Relations: SCHOLASTIC APTITUDE TEST required for out of state candidates and recommended for others.

Candidates for admission as freshmen are urged to take the Scholastic Aptitude Test (if required) in January. The Cornell selection process begins each year before March 1, and each applicant's file should be complete by that date, including Scholastic Aptitude Test scores. For the same reason candidates for admission as transfer students are urged to take the required College Board test (if any) in January.

No competitive advantage will accrue to a candidate from waiting to take a test later in the school year since all scores are studied in conjunction with secondary school or college records. On the contrary, candidates taking the Scholastic Aptitude Test later than January will be at some disadvantage. The amount of formal training of a particular applicant at the time of taking the test is taken fully into consideration.

WHERE TO APPLY... Candidates should make application by mail to the College Entrance Examination Board. Students who wish to take an examination in Arizona, California, Colorado, Idaho, Montana, Nevada, New Mexico, Oregon, Utah, Washington, Wyoming, Territory of Alaska, Territory of Hawaii, Northwest Territory, Yukon Territory, Province of Alberta, Province of British Columbia, Province of Manitoba, Province of Saskatchewan, Republic of Mexico, Australia, or any Pacific islands including Formosa and Japan, should address their applications to College Entrance Examination Board, Box 27896, Los Angeles 27, California.

All others should write to College Entrance Examination Board, Box 592, Princeton, New Jersey.

The Bulletin of Information, obtainable without charge from the College Entrance Examination Board, contains rules regarding applications, fees, reports, and the conduct of the tests; lists of examination centers; and an application blank bound in. Separate booklets describing the tests and giving sample questions and answers will be sent to each registered candidate.

ACHIEVEMENT TESTS FOR ARTS AND SCIENCES AND ENGINEERING PHYSICS

Certain of the achievement tests of the College Entrance Examination Board are required in connection with assignment to proper class sections.

All accepted applicants in Arts and Sciences must take the English Achievement Test of the Board either in March or May, unless the test has been taken previously in the senior secondary school year.

Accepted applicants in Arts and Sciences who have studied two years or more of a modern foreign language in secondary school must present an achievement test in that language, regardless of when the study of that language terminated. If the student has studied two or more modern foreign languages, for at least two years each, the language achievement test should be presented in the language the student prefers to study in college. Should the student wish to keep this choice open, tests must be presented in each of the languages under consideration. Those who plan to continue Latin or Greek need take no achievement test in these languages.

All accepted candidates in engineering physics who wish to continue in Cornell a modern foreign language begun in secondary school, or wish to attempt exempting the language requirement for graduation in that course, are encouraged to take the appropriate foreign language achievement test of the Board not later than August.

ADVANCED PLACEMENT FOR ENTERING FRESHMEN

Advanced placement, and in some areas credit toward graduation, is available in certain subjects. These subjects are biology, chemistry, English, history, Latin, literature, mathematics, modern foreign languages, and physics.

More details as to this program are available in a pamphlet which may be obtained, upon request, from the Office of Admissions.

ADMISSION OF TRANSFER STUDENTS

A student who has attended another college or university and plans to transfer to an undergraduate course at Cornell should (after filing an application for admission) submit an official transcript from the institution he has attended, giving evidence of honorable dismissal, and a statement of his secondary school record on a blank that will be supplied by the Director of Admissions. The Scholastic Aptitude Test of the College Entrance Board is required for consideration in Arts and Sciences, Home Economics, and Hotel Administration, and is recommended in most other divisions. The Scholastic Aptitude Test should be taken in December for February applicants or in January for September applicants. The applicant should be prepared to send a copy of the institution's catalogue, on which he has written his name and checked each course he has taken, if requested to do so.

Because of regulations governing residence and housing limitations, only a very few women with advanced standing can be accepted in the College of Arts and Sciences. Consequently, serious consideration can be given only to the applications of students of exceptional promise. High scholarship, superior personal qualifications, and impelling reasons will weigh heavily in the selection. Preference will be given to candidates for sophomore standing whose freshman program has consisted of courses similar in kind to courses offered in the College of Arts and Sciences and which permit easy integration with the undergraduate curriculum. Final actions on applications will be taken only after receipt of the complete transcript of record.

ADMISSION OF SPECIAL STUDENTS

A candidate for admission as a special student should consult the Announcement of the division of the University in which he wishes to study, because the requirements of the various colleges are not all alike. An applicant must give evidence of ability to do creditable work in his chosen field, and he must be recommended for admission by the division in which he proposes to study. Several of the colleges have minimum age limits for special students, although these age limits are waived for those who already hold the Bachelor's degree.

III

ORIENTATION

THE UNIVERSITY sponsors an orientation program at the beginning of the school year to introduce new students to the campus community and to the opportunities and responsibilities at Cornell.

The program, sponsored by the faculty and student body, seeks to acquaint the student with the academic, extracurricular, and social life of the University. Some of the separate colleges conduct extended orientation programs throughout the year for their own students.

IV

COUNSELING SERVICES

THE UNIVERSITY, through the Office of the Dean of Men and Dean of Women, maintains extensive counseling services that are available at all times to any student who needs assistance, either in connection with routine matters that may come up in his normal life on the campus or in connection with special personal problems.

The Deans are prepared to assist students in answering questions regarding educational programs, finances, health, vocations, and extracurricular activities. Referrals may be made to the professionally trained members of the University or college staffs who are best qualified to be of assistance in the particular problem. Trained counselors are available to assist the student in making vocational choices or to refer him to the proper counselor in his school or college. Ap-

pointments for interest and aptitude testing may be made through the Office of the Dean of Men and Dean of Women, which works closely with the University Testing Service.

The services of the Deans are available to many of the student organizations that deal with student government, the social program, and other extracurricular activities. Among the special services offered by the Office of the Dean of Men is registration of men for Selective Service as they reach 18.

Financial counseling and a student employment service are available through the Deans' Office.

In addition to the University counseling services, the various divisions of the University maintain counseling facilities for their students, giving them competent advice on those matters which arise in connection with their courses of study and other academic work.

The University counseling programs and the various school and college programs have for their aim the education of the whole individual and the proper adjustment and integration of every student at Cornell.

V

STUDENT HOUSING

CORNELL UNIVERSITY provides attractive, quiet, living accommodations at reasonable cost for men and women students, undergraduate and graduate. Pleasant surroundings are assured those who occupy the campus dormitories, which are within convenient distance of the academic buildings, the libraries, and the student union building (Willard Straight Hall).

In addition to the University-operated residential halls, the Ithaca area offers a wide range of accommodations to meet individual needs.

MEN STUDENTS. . . Housing for men at Cornell falls into several categories: residential halls for men, fraternities (for members only),

and off-campus facilities. Meals may be obtained in cafeterias and restaurants on or near the campus. Men are not required to live in the University dormitories and are individually responsible for making their own living and dining arrangements.

Application forms for University dormitory rooms are mailed to undergraduate candidates for admission by the Office of Admissions at the time of notification of provisional acceptance to the University. *A prospective student should not assume that admission to the University automatically reserves a space for him in the dormitories.* The application should be completed and returned to the Office of Residential Halls as soon as plans to enter the University are complete, but no later than June 1st.

The entering freshman class is given first consideration in assignment of dormitory space. Approximately 60 percent of the 2000 available spaces will be reserved for newly matriculated students. The balance is available for upperclassmen and graduate students. *Assignments are made in order of application date* to those dormitory applicants who are admitted to the University by June 1.

WOMEN STUDENTS....All undergraduate women who reside outside the Ithaca area are required to live and take their meals in University dormitories or in sororities (for members only). Permission to live elsewhere in Ithaca is granted under exceptional circumstances upon written application to the Office of the Dean of Women, Edmund Ezra Day Hall.

An application form for living accommodations will be included in the notice of provisional acceptance sent by the Office of Admissions to each undergraduate woman candidate. This form should be completed and returned promptly to the Office of Residential Halls.

Graduate women students should address inquiries regarding housing directly to the Office of Residential Halls, Edmund Ezra Day Hall. Information about both on-campus and off-campus facilities will be forwarded upon request.

MARRIED STUDENTS....Housing for married students is available in the new University-operated, 96-unit family housing development known as the Pleasant Grove Apartments, in the recently renovated 84-unit development southeast of the campus, or in privately owned properties in Ithaca and vicinity. Inquiries concerning either type of housing should be directed to Off-Campus Housing, Office of Residential Halls, Edmund Ezra Day Hall.

VI

HEALTH SERVICES AND MEDICAL CARE

THE STUDENT'S health is of the utmost importance to successful college work. While good health does not guarantee academic success, poor health can be an important factor in failure. Prospective students are urged to have dental, visual, and other remediable defects corrected before entering the University.

If, in the opinion of the University authorities, the condition of a student's health makes it unwise for him to remain in the University, he may be required to withdraw.

THE CLINIC AND THE INFIRMARY. . . The health services and medical care of Cornell students are centered in the Gannett Medical Clinic (out-patient department) and in the Cornell Infirmary (hospital). Students may consult a physician at the Clinic whenever need arises and receive treatment in cases that do not require hospitalization. If hospital care is indicated, the student is requested to enter the Infirmary. The Infirmary, a hospital fully accredited by the Joint Commission on Accreditation for Hospitals, is well equipped for medical and surgical service. The Infirmary staff, under the supervision of the Clinical Director, consists of resident physicians, attending physicians from the University staff, and consulting physicians and surgeons in the various medical fields from Ithaca and vicinity.

THE COLLEGE AND UNIVERSITY GENERAL FEE covers treatment at the Clinic and medical and emergency surgical care at the Infirmary. Hospitalization in the Infirmary for a maximum of two weeks each term is included. If hospitalization extends beyond fourteen days, students will be charged on a per diem basis. Emergency surgical care is defined as initial surgical procedure which, in the opinion of the Clinical Director, is necessary for the immediate welfare and safety of the patient. The fee does not include surgery for the correction of chronic remediable defects or obstetrical care.

Emergency house calls to student residences are charged at \$3 for a day call and \$5 for a night call. (In providing these services the University reserves the right to bill the student's employer or other third party legally responsible for providing hospitalization and medical care and to be subrogated to the student's right against these parties for the cost of these services when such liability exists.)

On a voluntary basis, insurance is available to supplement the services provided by the health fee. Thus, hospitalization at the Infirmary in excess of fourteen days per term, and expenses for illness and accidents outside Ithaca both during the academic year and during vacations would be covered. (Information about such insurance may be obtained at the student Medical Clinic.)

THE RIGHT TO EMPLOY A PRIVATE PHYSICIAN....If a student prefers to consult a private physician rather than go to the Clinic, or to have the services of a private doctor from Ithaca while a patient in the Infirmary, he must bear the cost of these services.

Each entering student is expected to assume personal responsibility for fulfilling the following health requirements adopted by the trustees of Cornell University. Permission to register for a new semester will not be granted unless all health requirements pertaining to the previous semester have been fulfilled.*

IMMUNIZATION....A satisfactory certificate of immunization against smallpox, on the form supplied by the University, must be submitted before registration. It will be accepted as satisfactory only if it certifies that within the last three years a successful vaccination has been performed. If this requirement cannot be fulfilled by the student's home physician, opportunity for immunization will be offered by the Cornell medical staff during the student's first semester, with the cost to be borne by the student. If a student has been absent from the University for more than three years, immunity will be considered to have lapsed.

X-RAY....Every student is required to have a chest X-ray. He may present a chest film, made by a private physician, on or before entering Cornell, provided that it was obtained within six months of initial registration and is of acceptable quality. Otherwise, he may obtain the chest X-ray at the University during orientation or his first semester; in that case, the charge, covering also any necessary

*Prospective graduate students should consult the *Announcement of the Graduate School* for health requirements on entrance.

recheck films, will be included in the general University fee. When a student has been away from the University for more than a year, he must have another X-ray on re-entrance.

MEDICAL EXAMINATION. . . Each undergraduate student is required to have a medical examination. (This includes special students who must meet undergraduate requirements such as military training, physical education, etc.) An undergraduate student accepted for admission will be sent forms to be filled out by his home physician and returned promptly to the Gannett Medical Clinic. A University physician will review the material before it becomes part of the student's permanent health record. All information given is confidential. During orientation, a specialized recheck of any questionable medical items will be made, and if need for re-examination or follow-up is indicated, an appointment to consult a physician at the Clinic will be given. When a student has been away from the University for more than a year, he must, upon re-entrance, submit an interim health history on a form to be obtained from the University.

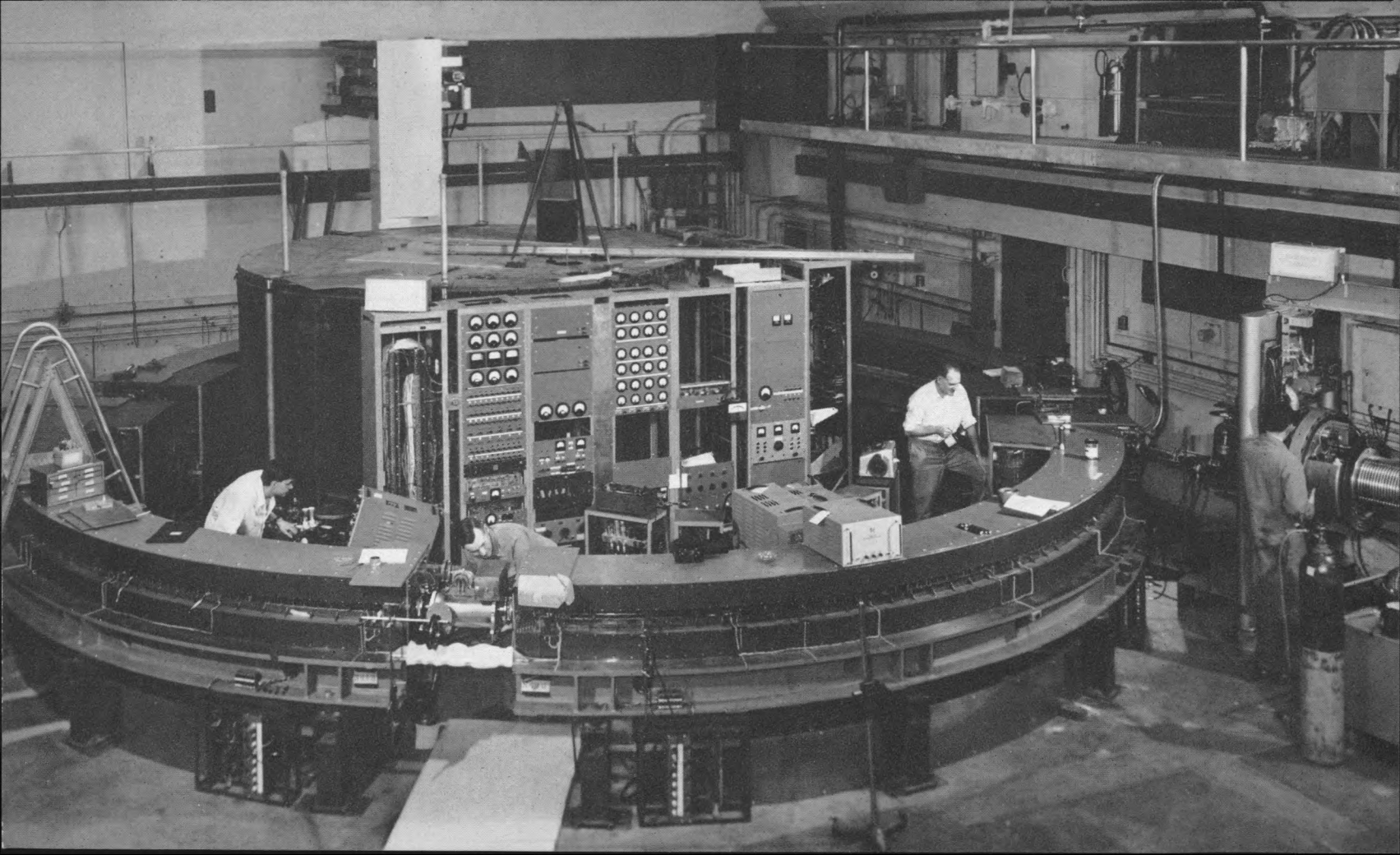
TETANUS TOXOID. . . Undergraduate students, including special students enrolled in one-year or two-year courses, are required to be immunized to tetanus through use of tetanus toxoid. The University has adopted this rule to avoid reactions, often serious, if antitoxin (horse serum) is administered at the time of injury. Immunity through toxoid offers the advantage of protection without the risk of antitoxin reaction.

A KEY TO THE ILLUSTRATIONS

Home economics students planning decoration of a modern home.
Barton Hall, drill building and setting for indoor track contests.
The powerful new synchrotron, one of the important research tools.
The New York Hospital-Cornell Medical Center in New York City.









Active immunization is to be acquired within nine months of initial registration unless the student's home physician is unable to give the toxoid. If there has been no previous immunization, an original series of two or three doses, depending on the type used, spaced at least one month apart, will be necessary. This will be followed by a booster dose one year later. If there has been previous immunization within ten years, reactivation by a single booster dose is required for entrance to Cornell. If previous immunization was ten or more years ago, two booster doses, spaced one month or more apart, are required. After entrance, five years is considered the maximum limit between booster doses, with a reactivating dose to be given at any time in case of injury.

Certification of immunization by the student's home physician is to be reported on the immunization form supplied by the University. Students unable to obtain the immunization at home will be given the opportunity, during the first semester, to obtain it from the Cornell medical staff or any Ithaca physician. If it is received from the latter, a charge comparable to the average physician's fee will be made. Opportunity to obtain the required booster dose one year later, and further booster doses as recommended by recognized medical authorities, without cost to the student, will also be given.

VII

STUDENT LIFE

CORNELL STUDENTS have the opportunity of participating in a varied program of activities outside the regular course of study. This opportunity, if wisely used, will greatly enrich the experience of going to college. Undergraduates at Cornell who are interested in student government, athletics, publications, music, dramatics, and social organizations—the entire range of activities usually referred to as extracurricular—will find that the University offers an exceptionally long list from which to choose. By no means can all of them be enumerated here. Of the major types a few are noted, in order that the prospective student may have a general idea of the sorts of activities likely to arouse his interest. He will have plenty of time to decide on the full extent of his participation when he has enrolled in the University and has become firmly established in his academic work.

ADMINISTRATIVE ORGANIZATIONS. . . . The University encourages undergraduates to take a large share of responsibility for the regulation of their own affairs. The students are represented on the Student Council through the top officers in the several classes, colleges, and activities. The Student Council acts as a liaison between the University administration and the student body and establishes policy for handling campus charities, freshman orientation, the big week ends, elections, the *Deskbook*, and current campus problems. The Women's Student Government Association is the self-governing body for women students.

STUDENT CONDUCT. . . . One rule governs the conduct of Cornell students: "A student is expected to show both within and without the University unfailing respect for order, morality, personal honor, and the rights of others." The rule is construed as applicable at all times, in all places, to all students of the University.

Undergraduate disciplinary cases are reviewed by the Men's and Women's Judiciary Boards, who make recommendations to the

Committee on Student Conduct for final action. A student may at any time be removed from the University if, in the opinion of the Committee, such action is in the University's best interests.

ATHLETICS. . . . At Cornell, athletics are designed to encourage the participation of every able-bodied student either in varsity sports or in the comprehensive intramural program. In addition to physical fitness, the work in athletics stresses the development of sportsmanship and a keen competitive spirit as enduring values that will be carried into later life. Varsity sports, with intercollegiate schedules, include baseball, basketball, crew, 150-pound crew, cross-country, fencing, football, 150-pound football, golf, hockey, lacrosse, polo, rifle, sailing, squash, soccer, skiing, swimming, tennis, track, wrestling. Intramural and informal sports include badminton, bowling, basketball, golf, hiking, hockey, outing club work, paddleball, riding, rugby, sailing, skating, skiing, soccer, softball, squash, swimming, tennis, touch football, track, and volleyball.

PUBLICATIONS. . . . Cornell students edit and publish a newspaper, the *Cornell Daily Sun*; a yearbook, the *Cornellian*; a humor magazine, the *Widow*; a literary review, the *Cornell Writer*; and a number of journals relating to special fields of interest such as the *Cornell Engineer*, the *Cornell Countryman*, and the *Cornell Law Quarterly*.

MUSIC. . . . The Sage Chapel Choir, the University Chorus, the Cornell A Cappella Chorus, the University Orchestra and Bands, the Glee Clubs, and other musical organizations give a wide range of opportunity to students who want to participate in making music. A generous concert schedule is provided by the Faculty Committee on Music, bringing famous soloists and major orchestras to the Bailey Hall series, and distinguished quartets and other groups to the Chamber Music series. In addition, the Music Department and the Music Committee of Willard Straight Hall join in sponsoring free Sunday afternoon concerts, mostly by faculty and students.

DRAMA AND THE THEATRE. . . . An extensive program in dramatic production is conducted by Cornell students under the sponsorship and general supervision of the Department of Speech and Drama. The Cornell Dramatic Club presents each year at least six full-length plays and a number of shorter pieces, some of them original. Through the activities of the Dramatic Club, undergraduates may obtain a valuable experience in both the theory and

practice of theatrical production. This experience includes play-writing, acting, directing, costuming, make-up, lighting, theatrical administration, and staging and design.

SOCIAL ACTIVITIES. . . Willard Straight Hall, the student union, serves as a center for social and cultural activities for all Cornell students. It has facilities for dances, receptions, and other social gatherings; a theatre; a game room; rooms set aside for music and for exhibitions of art; pictures and phonograph records available for rental to students; meeting rooms for student organizations; a library; lounges; dining services, including cafeteria, snack bar, dining room, and rooms for private parties; barber shop and rooms for overnight guests. All students are members of Willard Straight Hall by payment of the College and University General Fee.

For those with interests in particular fields, the professional and nonprofessional organizations in the several colleges and schools make a substantial contribution to the social life of the campus.

There are more than sixty fraternities and sororities at Cornell. Membership in these Greek-letter societies is by invitation. Most of the leading national organizations are represented on the campus.

RELIGIOUS ACTIVITIES. . . Although Cornell is a nonsectarian institution, religious activities assume a large and important place on the campus. Ample provision for fostering the religious life of students is made consistent with Cornell's historic principle of freedom from control by any religious group. Anabel Taylor Hall, Cornell's beautiful center for religious activities, is widely known as the home of Cornell's United Religious Work. It is staffed by fourteen University chaplains representing the major religious traditions at Cornell, ready to counsel, teach, and serve any who may call on them. In this organization, a student may participate in one of the extensive campus programs sponsored by the religious group of his choice, or he may participate in united religious activities which are open to all students. In addition, each Sunday throughout the academic year distinguished guest preachers of various denominations conduct well attended services in Cornell's Sage Chapel.

AUTOMOBILES. . . The University does not encourage student use of automobiles but recognizes that in certain cases there may be important reasons why a student needs an automobile. Freshmen are not permitted to have automobiles. Among the requirements governing the use of motor-driven vehicles are the following: (1)

registration of the vehicles with the Traffic Bureau of the Safety Division on registration days at the beginning of each term, or within 48 hours after bringing a car to Tompkins County during the term; (2) a registration fee of \$4 an academic year (a fine of \$10 is levied if the car is not registered within the specified time); (3) if the student is under 21, written consent of his parent or guardian; (4) evidence that the student may drive in New York State and that the vehicle may be driven here; (5) evidence that the vehicle is insured at the standard minima of \$10,000-\$20,000-\$5,000. Students may not park motor-driven vehicles on the campus except when permission has been granted in cases of physical disability or extreme hardship. Motorcycles and motor scooters must be registered but may not be used on the campus during class hours. Correspondence regarding motor vehicles should be addressed to the Safety Division, 101 Edmund Ezra Day Hall.

VIII

MILITARY SCIENCE AND PHYSICAL EDUCATION

AS A PART of the normal course of study leading to a baccalaureate degree, the University faculty has established certain requirements in addition to those prescribed by the various colleges and schools. All undergraduates, regardless of their courses of study, are held responsible for these requirements, which must be satisfied within fixed periods and can be postponed only by action of the Faculty Committee on Requirements for Graduation. Any entering student who believes that he qualifies for exemption from a requirement or for the postponement of its satisfaction should present his case to that member of the Committee who represents his college. (See the *Announcement of the Independent Divisions and Departments*.)

MILITARY SCIENCE

As a land grant institution chartered under the Morrill Act of 1862, Cornell offers courses in military science which include all branches of the service (Army, Navy, Air Force, and Marines). Successful completion of such courses and receipt of a baccalaureate degree qualify a male student for a commission in the Regular or Reserve component of the appropriate service.

Participation in military training during the first four terms is mandatory for all physically qualified undergraduate men who are United States citizens. Satisfactory completion of the basic course in military science and tactics, air science, or naval science fulfills this requirement. (See also the *Announcement of the Independent Divisions and Departments*.)

For a student entering with advanced standing, the number of terms of military training required is to be reduced by the number of terms which he has satisfactorily completed (not necessarily including military science) in a college of recognized standing. Service in the armed forces may under certain conditions also satisfy the military training requirement.

Entering students who have had previous ROTC training in secondary or military schools are requested to obtain DA Form 131 (Student's Record—ROTC) from the institution previously attended and to present it to the appropriate military department during registration.

PHYSICAL EDUCATION

All physically qualified students who are candidates for a baccalaureate degree are required to take physical education for three hours each week during the freshman and sophomore years. This course, which is under the general supervision of the Department of Physical Education and Athletics, is directed toward the development of skills and the encouragement of an interest in recreational sports that will be carried over after graduation, as well as toward the student's immediate physical welfare. Separate programs, under separate staffs, are maintained for men and women.

IX

EXPENSES AT CORNELL

THE COSTS of attending Cornell fall into two general categories. The first includes certain fixed charges for tuition, fees, and deposits, and related charges for services provided by the University. The second includes living costs and items of personal expense. This section is intended to help the student make a realistic estimate of his expenses in both categories. (General University charges are listed in detail at the end of the section.)

The regular academic year has two terms of sixteen weeks each. Tuition in the endowed undergraduate divisions at Ithaca is \$462.50 a term. In the Graduate School, the tuition is \$462.50 a term, if the student's major field is in one of the endowed divisions, or \$150 a term if the major is in a state-supported division (College of Agriculture, College of Home Economics, School of Industrial and Labor Relations, Veterinary College). Undergraduates in the state-supported divisions who, at the time of admission and for at least twelve months preceding, have been bona fide residents of the state are exempt from tuition. Out-of-state students in the state-supported divisions pay tuition of \$150 a term. (Tuition and charges in the Cornell University-New York Hospital School of Nursing and the Medical College are listed in the Announcements of those divisions.)

For certain services or privileges the University charges a College and University General Fee over and beyond tuition. This general fee is paid by all students in the divisions at Ithaca, the amount varying in the different schools and colleges. It contributes toward the services given by the libraries, the Clinic and Infirmary, and the student union in Willard Straight; it also pays part of the extra costs of laboratory courses and general administration, and supports programs of physical recreation and student activities.

Men students spend between \$135 and \$195 a term for room and from \$275 to \$325 a term for board. Laundry, done in Ithaca, may require \$25 to \$40 a term. For women, the fixed charge for board, room, and laundry in the dormitories is \$495 a term.

Books, instruments, and supplies will cost \$30 to \$50 a term.

The student will find this check list useful for estimating his expenses (figures are for the regular academic year of two terms).

MEN'S EXPENSES

WOMEN'S EXPENSES

| | CORNELL ESTIMATE | YOUR ESTIMATE | | CORNELL ESTIMATE |
|-----------------------------|---------------------|------------------|-----------------------------|---------------------|
| Tuition..... | \$0-925 | \$_____ | Tuition..... | \$0-925 |
| Deposit (first term only) * | \$45 | _____ | Deposit (first term only) * | \$45 |
| Fees..... | \$175-237 | _____ | Fees..... | \$175-237 |
| Room..... | \$270-390 | _____ | Room, board, and | |
| Meals..... | \$550-650 | _____ | laundry*..... | \$990 |
| Books, supplies..... | \$60-100 | _____ | Physical ed. equip.*... | \$18 |
| Clothing..... | | _____ | Books, supplies..... | \$60-100 |
| Laundry, cleaning..... | \$50-80 | _____ | Clothing..... | |
| Transportation | | _____ | Transportation | |
| (including vacations) | | _____ | (including vacations) | |
| Personal allowance | | _____ | Personal allowance | |
| and incidentals..... | \$120-160 | ===== | and incidentals..... | \$120-160 |
| <i>*Fixed expense.</i> | | \$_____ | <i>*Fixed expense.</i> | |

A more detailed circular on costs is available from the Office of the Financial Counselor, 142 Edmund Ezra Day Hall.

UNIVERSITY CHARGES....Students entering the Ithaca divisions of the University should familiarize themselves with the charges made in the college or school in which they plan to enroll and with the rules governing payments as given in the pages following. The table below lists the tuition and fees paid each term by students in the Ithaca divisions of the University (there are two terms of sixteen weeks each in the normal academic year).

COLLEGES OF ARCHITECTURE, ARTS AND SCIENCES, AND ENGINEERING; GRADUATE SCHOOLS OF AERONAUTICAL ENGINEERING AND BUSINESS & PUBLIC ADMINISTRATION; LAW SCHOOL; DIVISION OF UNCLASSIFIED STUDENTS; GRADUATE SCHOOL:

| | |
|---|-----------|
| Tuition | \$462.50† |
| College and University General Fee* | 87.50 |
| Total each term | \$550.00 |

GRADUATE SCHOOL OF NUTRITION:

| | |
|---|----------|
| Tuition | \$225.00 |
| College and University General Fee* | 87.50 |
| Total each term | \$312.50 |

SCHOOL OF HOTEL ADMINISTRATION:

| | |
|---|-----------------|
| Tuition | \$462.50 |
| College and University General Fee* | 87.50 |
| Total each term | <u>\$550.00</u> |

COLLEGE OF AGRICULTURE:

| | |
|---|-----------------|
| Tuition | \$150.00† |
| College and University General Fee* | 90.00 |
| Total each term | <u>\$240.00</u> |

COLLEGE OF HOME ECONOMICS:

| | |
|---|-----------------|
| *Tuition | \$150.00‡ |
| College and University General Fee* | 113.50 |
| Total each term | <u>\$263.50</u> |

VETERINARY COLLEGE:

| | |
|---|-----------------|
| Tuition | \$150.00‡ |
| College and University General Fee* | 118.50 |
| Total each term | <u>\$268.50</u> |

SCHOOL OF INDUSTRIAL AND LABOR RELATIONS:

| | |
|---|-----------------|
| Tuition | \$150.00‡ |
| College and University General Fee* | 88.50 |
| Total each term | <u>\$238.50</u> |

DIVISION OF EXTRAMURAL COURSES:

| | |
|-----------------------------------|---------|
| Tuition (for a credit hour) | \$29.00 |
|-----------------------------------|---------|

*The General Fee includes an allowance for the student's normal requirements of materials and breakage in laboratory courses and for certain materials in other courses. Costs in excess of this allowance will be charged against the student.

†\$150 for graduate students whose major field of concentration is in Agriculture, Home Economics, Industrial and Labor Relations, or Veterinary Medicine.

‡No tuition is charged bona fide residents of the State of New York who have lived in the state for at least one year immediately prior to matriculation in one of the state-supported schools or colleges (listed in the preceding footnote).

OTHER FEES AND DEPOSITS. . . In addition to the charges listed above, the following financial obligations should be carefully noted and taken into account in the student's budget of expenses for the term in which they are due.

An application fee of \$10 must be paid at the time an application for admission is submitted to any division. This fee takes effect with applications submitted for entrance in 1958.

A registration fee of \$45 must be paid after the applicant has received notice of provisional acceptance from any of the following divisions: Agriculture, Architecture, Arts and Sciences, Engineering (except Graduate School of Aeronautical Engineering), Home

Economics, Hotel Administration, Industrial and Labor Relations, Unclassified, and Veterinary. This fee covers matriculation charges and certain graduation expenses and establishes a fund for undergraduate and alumni class activities.

A registration fee of \$28 must be paid after the applicant has received notice of provisional acceptance from any of the following divisions: Graduate School of Business and Public Administration, Graduate School of Aeronautical Engineering, Graduate School of Nutrition, Graduate School.

A registration deposit of \$50 must be paid after the student has received notice of provisional acceptance from the Law School. After matriculation, \$17 of this fee is refunded. The balance covers matriculation expense and materials on Introduction to the Study of Law.

A deposit of \$30 against the cost of a uniform is payable at registration in the first term by those enrolling in the basic course in military science and tactics. Most of the deposit is returned as earned uniform allowance upon completion of the two-year basic course. If the student withdraws prior to completion of the course, he will owe for the total cost of the uniform less any uniform allowance earned and less a portion of the deposit. Uniforms cannot be turned in for credit.

TRANSFER TUITION... Any student transferring from one college (or course or courses) in the University to another must, on or before the time of transfer, pay an amount corresponding to the difference in tuition for the hours of credit that will be allowed in the latter college (or course or courses).

| For Credit Hours Taken in School Year: | Endowed College Rate per Student Hour: |
|---|---|
| 1952-1953, 1953-1954 | \$21.875 |
| 1954-1955 | 23.4375 |
| 1955-1956, 1956-1957 | 26.5625 |
| 1957-1958 | 28.90625 |

EXCESS HOURS TUITION... Senior students in the Colleges of Agriculture and Home Economics, except those students in Institution Management, if they desire to take courses in the endowed colleges beyond the hours allowed free under the rules of that college and beyond the total hours required for graduation, may be allowed to do so on payment for the additional hours of instruction at the rate of tuition in the college in which the instruction is given.

SPECIAL FEES....The following fees are imposed by the colleges and schools under certain conditions:

| | |
|---|--------|
| Late registration | \$5.00 |
| Make-up examination | 2.00 |
| Late filing of study card | 2.00 |
| Late change of program | 3.00 |
| Failure to check out chemistry desk | 5.00 |

RULES OF PAYMENT....Tuition and other fees become due when the student registers and must be paid within a prescribed period if enrollment is to be continued. The following regulations, adopted by the Treasurer under the direction of the Board of Trustees, govern the payment of student accounts.

Tuition and fees must be paid not later than twenty days after registration during the regular term and not later than five days after registration in the Summer Session or short courses. The student's enrollment is automatically terminated for failure to meet this obligation. In exceptional circumstances, the Treasurer may grant an extension of time for completion of payments. A fee of \$2 is charged for such an extension, and a fee of \$5 is charged for reinstatement of a student who has been dropped for nonpayment. For reasons judged adequate, the latter fee may be waived in any individual case.

Part of the tuition and fees will be refunded to students who withdraw, for reasons accepted as satisfactory, prior to the end of a term. For students who do not complete a term, tuition and fees will be charged at the rate of 10 per cent for each week or fraction of a week. No charge is made if the student withdraws within six days of the date of registration. The registration fee will not be refunded.

The amount, time, and manner of payment of tuition or any fee may be changed at any time by the Board of Trustees without notice.

METHOD OF PAYMENT....At the beginning of every session, the student receives from the Registrar a form which serves as his bill for the term. The Treasurer does not issue term bills. The form distributed by the Registrar is to be presented, with payment, to the cashier's window in the Treasurer's Office, 260 Edmund Ezra Day Hall (hours: 8 a.m. until 4:30 p.m. weekdays and until 12 p.m. Saturdays). Checks in payment of student accounts should be drawn in the amount owed.

The receipt given to the student serves as a certificate of registration and should be carefully preserved, since it is a means of

identification that will be found useful or even necessary on many occasions; it entitles the holder to membership in the student union (Willard Straight Hall), to the services of the Infirmary and Clinic, and to many other special privileges reserved to students.

X

FINANCIAL AID AND OPPORTUNITIES FOR EMPLOYMENT

AN ENTERING freshman who needs supplementary funds to meet the costs of his college education should have clearly in mind the additional amount needed in his particular case and should have a realistic plan for meeting the requirements of his budget during his first year. The usual ways in which college students assist themselves financially are through scholarships, loan funds, and part-time employment.

SCHOLARSHIPS

Competitive scholarships open to entering freshmen range in value from \$100 to \$2000 a year. Academic ability, as indicated by the candidate's secondary school credentials and by his College Board Scholastic Aptitude Test scores, is an important consideration in each instance. For some awards, the selection process also emphasizes extracurricular achievement and promise of leadership. Financial need is a factor in choosing winners of some awards and, in other cases, in determining the amounts granted.

A scholarship application may be obtained from the Scholarship Secretary, Office of Admissions. The scholarship application must be submitted before March 1 (in addition to the application for admission) by each candidate who wishes scholarship consideration.

All Cornell awards open to entering freshmen are included on this same scholarship application form, except for certain grants made by the College of Agriculture. The January College Board Scholastic Test is required of competitors.

New York State candidates interested in the New York State-Cornell scholarships and State University scholarships should apply to local school authorities or to the Commissioner of Education, Albany, New York, for details. Winners are not exempt from any of the rules governing admission to the University; they should therefore apply for admission at the normal time and should be prepared to satisfy the regular entrance requirements.

A publication describing scholarships is available on request to the Announcements Office, Edmund Ezra Day Hall. The writer should state whether he is a prospective freshman or a transfer student.

LOANS

The University, through its Committee on Student Aid, grants two types of loans to students. Short-term loans (up to \$100) are available to students who find themselves short of money at certain periods. Long-term loans of larger amounts are available to students who have shown themselves capable of carrying on a successful college program. Loans are not ordinarily available to foreign students.

PART-TIME CAMPUS EMPLOYMENT

Many students at Cornell earn part of their living expenses by working on or near the campus during the school year. Most of the opportunities are for unskilled labor. The number of jobs varies from year to year; the physical ability and the energy of the student have a bearing on the amount of work that can be handled successfully; and the course of study and the number of hours carried in classroom and laboratory must also be taken into account.

To assist students applying for part-time work, the Office of the Dean of Men and Dean of Women, in Edmund Ezra Day Hall, serves as an exchange for listing jobs that have been reported and for advising students of openings that may be available. Students should apply in advance of registration as the demand for available campus positions is great.

XI

VETERANS AT CORNELL

VETERANS attending Cornell under the educational benefits provided by Public Laws 16 (Rehabilitation), 346 ("G.I. Bill of Rights"), and 550 ("Korean G.I. Bill of Rights") must complete the necessary enrollment forms in the Treasurer's Office at the time they register in the University.

Inquiries relating to the use of Veterans Administration education benefits at Cornell should be addressed to the nearest V.A. Regional Office.

XII

COLLEGE TRAINING AND CAREERS

THE UNIVERSITY makes every effort to assist students in entering the careers for which they are prepared. Vocational counseling begins in the separate colleges and schools, where the undergraduate will be assigned a faculty adviser who will help him in the selection of courses that will give the best basic preparation in the chosen field. In addition, most of the colleges and schools maintain placement offices designed to help the student get the sort of job he wants. These placement offices work in close cooperation with the University Placement Service in Edmund Ezra Day Hall, which has a full-time staff available for consultation. The Placement Service arranges interviews with employers, supervises the assembling and presentation of personnel records, and assists Cornell men and women who are ready for positions in business and industry.

For a person about to begin college, the matter of deciding in which division of the University he wants to study should not be difficult. The general descriptions of the work in the several colleges and schools, as given in Section I, should indicate which division offers the desired type of preparation. The prospective student should write for the Announcement that gives a detailed description of the curriculum in which he is interested. A list of Announcements, with the address, is on the inside back cover of this publication.

The prospective student frequently and naturally thinks in terms of specific courses, such as chemistry, or design, or animal husbandry, instead of in terms of a broad curriculum such as Arts and Sciences, or Architecture, or Agriculture. He may have had experience in some particular field and may be interested in getting college training leading to a career as a chemist, an architect, or a dairyman. To assist the applicant in identifying the division in the University where particular instruction is offered, a general list of subjects of study is presented in the following pages. The subject is in the left-hand column of the list and the college or school in which the subject forms a part of the curriculum is in the right-hand column.

A LIST OF SUBJECTS OF STUDY

The various divisions of the University are abbreviated as follows: the Colleges of Architecture, Arts and Sciences, Engineering, and Medicine as *Arch*, *Arts*, *Eng*, and *Med*; the Colleges of Agriculture, Home Economics, and Veterinary Medicine as *Agric*, *Home Ec*, and *Vet*; the Schools of Education, Industrial and Labor Relations, Law, and Nursing, and the Graduate Schools of Nutrition and of Business and Public Administration as *Educ*, *I.L.R.*, *Law*, *Nurs*, *Nutrit*, and *Bus*. Hotel Administration is abbreviated as *Hotel* and the Graduate School as *Grad*. Each of the above divisions has a separate Announcement. Information concerning Military Science and Tactics, Air Science, Naval Science, Physical Education, Clinical and Preventive Medicine, and Extramural Courses is given in the *Announcement of the Independent Divisions and Departments (ID)*.

| <i>Subject of Study</i> | <i>College or School</i> | <i>Subject of Study</i> | <i>College or School</i> |
|---|-------------------------------------|----------------------------------|--------------------------|
| ACCOUNTING | <i>Arts, Bus, Agric, Eng, Hotel</i> | dairy husbandry | meat and meat products |
| ADMINISTRATIVE PROCESS | <i>Bus</i> | ANTHROPOLOGY | <i>Arts</i> |
| AERONAUTICAL ENGINEERING | <i>Eng</i> | ARBITRATION | <i>I.L.R.</i> |
| AGRICULTURAL BROADCASTING | <i>Agric</i> | ARCHAEOLOGY (See FINE ARTS).... | <i>Arts</i> |
| AGRICULTURAL ECONOMICS | <i>Agric</i> | ARCHITECTURE | <i>Arch</i> |
| agricultural policy | | ARCHITECTURAL ENGINEERING | <i>Arch</i> |
| agricultural geography and land economics | | ASTRONOMY | <i>Arts</i> |
| business management | | BACTERIOLOGY | <i>Agric, Med, Vet</i> |
| farm finance | prices | BANKING AND FINANCE | <i>Bus</i> |
| farm management | | BIBLIOGRAPHY | <i>Arts</i> |
| land economics | | BIOCHEMISTRY | <i>Agric, Nutrit</i> |
| marketing | statistics | BIOLOGY | <i>Agric, Arts</i> |
| public administration | | BIOPHYSICS | <i>Arts</i> |
| AGRICULTURAL ENGINEERING | <i>Agric, Eng</i> | BOTANY | <i>Agric, Arts</i> |
| farm mechanics | farm structures | BUSINESS MANAGEMENT | <i>Bus</i> |
| AGRICULTURAL EXTENSION | <i>Agric</i> | CHEMICAL ENGINEERING | <i>Eng</i> |
| AGRICULTURAL JOURNALISM | <i>Agric</i> | industrial chemistry | |
| AGRICULTURAL MANAGEMENT (grad.) | <i>Agric and Bus</i> | process design and economics | |
| AGRONOMY | <i>Agric</i> | reaction kinetics | |
| field crops | soil science | metallurgy and metallography | |
| soil conservation | | nuclear energy | |
| AIR SCIENCE | <i>ID</i> | biochemical engineering | |
| ANIMAL HUSBANDRY | <i>Agric</i> | polymeric materials | |
| animal breeding | livestock | CHEMISTRY | <i>Arts</i> |
| animal nutrition | production | CITY MANAGEMENT | <i>Bus</i> |
| | | CITY AND REGIONAL PLANNING | <i>Arch</i> |
| | | CIVIL ENGINEERING | <i>Eng</i> |
| | | geodetic engineering | |

| <i>Subject of Study</i> | <i>College or School</i> |
|------------------------------------|--------------------------|
| hydraulic engineering | |
| sanitary engineering | |
| structural engineering | |
| transportation engineering | |
| CLASSICS | <i>Arts</i> |
| COLLECTIVE BARGAINING | <i>I.L.R.</i> |
| COMMUNICATIONS | |
| (See ELECTRICAL ENGINEERING) | |
| CONSERVATION | <i>Agric</i> |
| farm forestry | ornithology |
| fishery biology | vertebrate zoology |
| wildlife management | |
| DAIRY INDUSTRY | <i>Agric</i> |
| fluid milk handling and processing | |
| manufacture of milk products | |
| DESIGN, ARCHITECTURAL | <i>Arch</i> |
| DRAMA, SPEECH AND | <i>Arts</i> |
| DRAMATIC PRODUCTION | <i>Arts</i> |
| DRAWING, MECHANICAL | <i>Eng, Agric</i> |
| DRAWING AND PAINTING ... | <i>Agric, Arch</i> |
| ECONOMICS | <i>Agric, Arts</i> |
| EDUCATION | <i>Educ</i> |
| academic subjects | |
| industrial arts | |
| rural education | |
| administration and supervision | |
| educational psychology | |
| educational theory | |
| guidance | |
| measurement and statistics | |
| nature study | |
| psychology | |
| teaching of agriculture | |
| teaching of home economics | |
| teaching of science | |
| ELECTRICAL ENGINEERING | <i>Eng</i> |
| electric power and design | |
| electrical communication | |
| industrial electronics | |
| ENGINEERING | <i>Eng</i> |
| See also: | |
| aeronautical engineering | |
| agricultural engineering | |
| chemical engineering | |
| civil engineering | |
| electrical engineering | |
| engineering physics | |
| mechanical engineering | |

| <i>Subject of Study</i> | <i>College or School</i> |
|-----------------------------------|-------------------------------|
| metallurgical engineering | |
| ENGINEERING, AGRICULTURAL | <i>Agric, Eng</i> |
| ENGINEERING, HOTEL | <i>Hotel</i> |
| ENGINEERING PHYSICS | <i>Eng</i> |
| ENGLISH | <i>Arts</i> |
| ENTOMOLOGY | <i>Agric</i> |
| beekeeping | |
| insect morphology | |
| insect physiology | |
| insect taxonomy | |
| limnology | |
| medical entomology | |
| parasitology | |
| FAR EASTERN STUDIES | <i>Arts</i> |
| FARM FORESTRY | <i>Agric</i> |
| FEDERAL ADMINISTRATION | <i>Bus</i> |
| FINANCE, BUSINESS AND PUBLIC | <i>Bus</i> |
| FINE ARTS | <i>Arch, Arts</i> |
| practice of | <i>Arch</i> |
| history of | <i>Arts</i> |
| FLORICULTURE | <i>Agric</i> |
| landscape service | |
| ornamental horticulture | |
| plant materials and propagation | |
| FOOD AND NUTRITION | <i>Home Ec, Hotel, Nutrit</i> |
| FOOD SCIENCE AND TECHNOLOGY... | <i>Agric, Home Ec, Nutrit</i> |
| FORESTRY | (See FARM FORESTRY) |
| GEOGRAPHY | <i>Arts</i> |
| GEOLOGY | <i>Arts</i> |
| GOVERNMENT | <i>Arts</i> |
| GRADUATE STUDY | <i>Grad</i> |
| GUIDANCE | <i>Educ</i> |
| HEALTH | <i>ID</i> |
| HISTORY | <i>Arts</i> |
| HOME ECONOMICS | <i>Home Ec</i> |
| child development and family | |
| relationships | |
| economics of the household and | |
| household management | |
| food and nutrition | |
| home economics education | |
| home economics journalism | |
| housing and design | |
| institution management | |
| textiles and clothing | |

| <i>Subject of Study</i> | <i>College or School</i> | <i>Subject of Study</i> | <i>College or School</i> |
|--------------------------------------|--------------------------|----------------------------------|--------------------------|
| HOSPITAL ADMINISTRATION | <i>Bus</i> | LAW | <i>Law</i> |
| HOTEL ADMINISTRATION | <i>Hotel</i> | jurisprudence | |
| accounting | | private law | |
| administration | | procedure | |
| engineering | | public law | |
| economics and finance | | LITERATURE | <i>Arts</i> |
| hotel and restaurant equipment | | MANAGERIAL ECONOMICS | <i>Bus</i> |
| food production | | MARKETING | <i>Bus, Agric</i> |
| food science | | MATHEMATICS | <i>Arts</i> |
| housekeeping | | MECHANICAL ENGINEERING | <i>Eng</i> |
| restaurant administration | | aeronautical engineering | |
| HOUSEHOLD MANAGEMENT | <i>Home Ec</i> | automotive engineering | |
| HOUSING | <i>Eng, Home Ec</i> | electrical engineering | |
| INDUSTRIAL EDUCATION AND TRAINING.. | <i>I.L.R.</i> | engineering materials | |
| INDUSTRIAL ENGINEERING AND | | experimental engineering | |
| MANAGEMENT | <i>Eng</i> | heat engineering | |
| INDUSTRIAL AND LABOR | | heat-power engineering | |
| RELATIONS | <i>I.L.R.</i> | heating, ventilating, and air | |
| collective bargaining | | conditioning | |
| economic and social statistics | | industrial engineering | |
| human relations in industry | | internal combustion engines | |
| industrial education and training | | materials processing | |
| journalism | | mechanical design | |
| labor market economics and | | mechanics and strength of | |
| analysis | | materials | |
| labor union history and administra- | | physics | |
| tion | | refrigeration engineering | |
| personnel administration | | structural engineering | |
| social security and protective labor | | tool engineering | |
| legislation | | welding engineering | |
| INSTITUTION MANAGEMENT | | MEDIATION | <i>I.L.R.</i> |
| <i>Home Ec, Hotel</i> | | MEDICINE AND SURGERY | <i>Med</i> |
| INTERNATIONAL AND FOREIGN | | anatomy | |
| OPERATIONS | <i>Bus</i> | bacteriology and immunology | |
| INTERNATIONAL RELATIONS | <i>Arts,</i> | biochemistry | |
| <i>Bus, Law</i> | | medicine and medical specialties | |
| JOURNALISM* | <i>Agric,</i> | microbiology and immunology | |
| <i>Home Ec, I.L.R.</i> | | military medicine | |
| JOURNALISM, NONPROFESSIONAL | | obstetrics and gynecology | |
| PREPARATION FOR* | <i>Arts</i> | pathology | |
| LABOR RELATIONS (See INDUSTRIAL AND | | pediatrics | |
| LABOR RELATIONS) | | pharmacology | |
| LANDSCAPE ARCHITECTURE | <i>Arch</i> | physiology and biophysics | |
| LANGUAGES, MODERN AND | | psychiatry | |
| ANCIENT | <i>Arts</i> | public health and preventive | |
| | | medicine | |

*The courses in secretarial work and journalism do not lead to degrees in those fields.

| <i>Subject of Study</i> | <i>College or School</i> | <i>Subject of Study</i> | <i>College or School</i> |
|----------------------------------|-------------------------------|-----------------------------------|---------------------------------|
| radiology | | PREVETERINARY TRAINING | <i>Agric, Arts</i> |
| surgery and surgical specialties | | PRODUCTION | <i>Bus</i> |
| METALLURGICAL ENGINEERING | <i>Eng</i> | PSYCHOBIOLOGY | <i>Arts</i> |
| metallography | | PSYCHOLOGY | <i>Arts</i> |
| physical metallurgy | | PUBLIC ADMINISTRATION | <i>Bus, Agric</i> |
| process metallurgy | | PUBLIC MANAGEMENT | <i>Bus</i> |
| METEOROLOGY | <i>Agric</i> | PUBLIC RELATIONS | <i>Agric, Hotel, I.L.R.</i> |
| MILITARY SCIENCE AND | | PUBLIC SPEAKING | <i>Arts, Agric</i> |
| TACTICS | <i>ID</i> | RADIO-TELEVISION | <i>Agric, Arts, Eng</i> |
| MUSIC | <i>Arts</i> | REGIONAL PLANNING | <i>Arch</i> |
| NAVAL SCIENCE | <i>ID</i> | RESTAURANT ADMINISTRATION | <i>Hotel</i> |
| NUCLEAR STUDIES | <i>Arts</i> | ROMANCE LANGUAGES | <i>Arts</i> |
| NURSING | <i>Nurs</i> | RURAL EDUCATION | <i>(See EDUCATION)</i> |
| NURSING, ADMISSION REQUIREMENTS | | RURAL SOCIOLOGY | <i>Agric</i> |
| | <i>Arts, Home Ec, Agric</i> | SCULPTURE | <i>Arch</i> |
| NUTRITION | <i>Nutrit</i> | SECRETARIAL* | <i>Hotel</i> |
| NUTRITION, ANIMAL | <i>Agric</i> | dictation | shorthand |
| NUTRITION, FOOD AND | <i>Home Ec, Hotel, Nutrit</i> | procedures | typewriting |
| ORNITHOLOGY | <i>Agric</i> | SOCIAL SECURITY | <i>I.L.R.</i> |
| PAINTING | <i>Arch</i> | SOCIAL SERVICE | <i>Agric, Home Ec</i> |
| PERSONNEL MANAGEMENT | <i>Educ, Hotel, I.L.R.</i> | SOCIAL STUDIES | <i>Arts</i> |
| PERSONNEL PSYCHOLOGY | <i>I.L.R.</i> | SOCIOLOGY | <i>Arts</i> |
| PERSONNEL RELATIONS | <i>Bus</i> | SPEECH AND DRAMA | <i>Arts</i> |
| PHILOSOPHY | <i>Arts</i> | STATISTICS | <i>Bus, I.L.R., Agric, Arts</i> |
| PHYSICAL EDUCATION | <i>ID</i> | TEACHING | <i>(See EDUCATION)</i> |
| PHYSICS | <i>Arts, Eng</i> | TEXTILES AND CLOTHING | <i>Home Ec</i> |
| PHYSIOLOGY | <i>Agric, Arts, Vet</i> | TRANSPORTATION | <i>Arts, Eng, Bus</i> |
| PLANT BREEDING | <i>Agric</i> | VEGETABLE CROPS | <i>Agric</i> |
| genetics | | VETERINARY MEDICINE | <i>Vet</i> |
| PLANT PATHOLOGY | <i>Agric</i> | anatomy | physiology |
| mycology | | animal parasitology | surgery |
| POMOLOGY | <i>Agric</i> | | virology |
| POULTRY HUSBANDRY | <i>Agric</i> | therapeutics | |
| breeding | nutrition | microscopy, histology, embryology | |
| management | | pathology and bacteriology | |
| PREDENTAL TRAINING | <i>Arts</i> | pharmacology | |
| PRELAW TRAINING | <i>Arts</i> | WORKMEN'S COMPENSATION | <i>I.L.R.</i> |
| PREMEDICAL TRAINING | <i>Arts</i> | ZOOLOGY | <i>Arts, Agric</i> |

*The courses in secretarial work and journalism do not lead to degrees in those fields.

INDEX

- Academic Calendar, *Inside front cover*
- Achievement tests, 31
- Activities, student, 46
- Admissions: general policies, 10, 25; for
graduate and professional degrees,
17-23, 25
- Advanced placement of freshmen, 33
- Agriculture, College of, 11, 29, 53, 60
- Air Science, 50, 60
- Alumni, children of, 27
- Announcements, list of, *Inside back
cover*
- Applications: for admission, 25, 29, 53;
for housing, 37
- Architecture, College of, 12, 30, 52, 60
- Arts & Sciences, College of, 12, 30, 52, 60
- Athletics, 47
- Automobiles, 48
- Business & Public Administration,
Graduate School of, 21, 52, 60
- Calendar, Academic, *Inside front cover*
- Careers, 58
- Catalogues, list of, *Inside back cover*
- College Board tests, 28, 31-34, 56
- Counseling, 35, 56
- Courses, Announcements of, *Inside
back cover*
- Divisions, teaching, 10-23
- Dormitories, 36
- Drama, 47, 60
- Education, School of, 16, 60
- Employment: on campus, 56; after
graduation, 58
- Engineering, College of, 14, 30, 52, 60
- Enrollment, size of, 4
- Entrance subjects and units, 27
- Expenses, 51
- Extracurricular activities, 26, 46
- Extramural Courses, 23, 53, 60
- Fees, 52
- Financial Aid, 56
- Fine Arts, 12, 13, 60
- Graduate School, 10, 22, 52, 60
- Graduate studies in various divisions,
11-23
- Health requirements, medical services,
38-40
- History of Cornell, 3
- Home Economics, College of, 14, 30, 53,
60
- Hotel Administration, School of, 15, 31,
53, 60
- Housing, student, 36
- Illustrations, 5-9, 41-44
- Independent Divisions & Departments,
49, 60
- Industrial & Labor Relations, School of,
16, 31, 53, 60
- Law School, 18, 52, 60
- Loans, 57
- Medical care, 38
- Medical College, 20, 60
- Military Science, 49, 60
- Music, 47
- Naval Science, 49, 60
- New York Hospital, 19
- Nursing, School of, 19, 60
- Nutrition, Graduate School of, 19, 52,
60
- Organizations for students, 46
- Orientation for new students, 35
- Payments: dates, methods, 55
- Physical Education, 49, 60
- Placement Service, 58
- Publications, student, 47
- Regents examinations, 28
- Religious activities, 48
- Requirements for admission. *See*
Admissions
- Residential Halls, 36
- Scholarships, 56
- Secondary School Record, 27
- Selective Service, 36
- Size of the University, 4
- Social activities, 48
- Special Students, 34
- Student conduct, 46
- Student union, 48
- Subjects of study, list of, 60
- Summer Session, 24
- Tests, *See* Admissions
- Transfer students, 34, 54
- Tuition, 52
- Unclassified Students, 24, 52
- Veterans, 58
- Veterinary College, 17, 31, 53, 60
- Vocations, 58

CORNELL UNIVERSITY ANNOUNCEMENTS

These publications are designed to give prospective students and others information about Cornell University. The prospective student should have a copy of *General Information*; after consulting that, he may wish to write for one or more of the following Announcements:

New York State College of Agriculture (Four-Year Course), New York State College of Agriculture (Two-Year Course), College of Architecture, College of Arts and Sciences, School of Education, College of Engineering, Department of Far Eastern Studies, New York State College of Home Economics, School of Hotel Administration, Independent Divisions and Departments, New York State School of Industrial and Labor Relations, Summer Session, Financial Aids and Scholarships [for undergraduates and prospective freshmen].

Undergraduate preparation in a recognized college or university is required for admission to the following Cornell divisions, for which Announcements are available: *Graduate School of Business and Public Administration, Law School, Medical College, Cornell University-New York Hospital School of Nursing, Graduate School of Nutrition, New York State Veterinary College, Graduate School*. Scholarships, fellowships, and other financial aid for graduate students are described in the Announcements of these graduate divisions.

Requests for these publications may be addressed to

CORNELL UNIVERSITY ANNOUNCEMENTS

EDMUND EZRA DAY HALL, ITHACA, NEW YORK

