

New Traditions and Transitions: A Web Portal to Discover, Create and Exchange Knowledge of the Sonoran Desert

By Jeanne Pfander, Kimberly Chapman,
and Jim Martin

University of Arizona Libraries
(Presented by Jeanne Pfander)

USAIN Conference
April 29, 2008



- Where and What is the Sonoran Desert?
- What is the Sonoran Desert Knowledge Exchange?
 - Vision
 - History
 - Partners and Participants
- Project Development 2007-2008
- Next Steps



The Sonoran Desert

- Most of the southern half of Arizona, southeastern California, most of the Baja California peninsula, the islands of the Gulf of California, and much of the state of Sonora, Mexico
 - [Map of the Sonoran Desert](#)
- Unique features / characteristics
 - The Saguaro! -Two Rainy Seasons
 - Amazing biodiversity!



Sonoran Desert Knowledge Exchange

The Sonoran Desert Knowledge Exchange (SDKE) is a collaborative initiative led by the UA Libraries that seeks to bring together individuals and organizations who have information, services and other resources that can contribute to increased awareness, research and preservation of the Sonoran Desert.



Vision

- a distributed, dynamic, online portal
- one-stop shopping access to digital content
- serving diverse audiences including teachers and students of all grade levels, scientists, decision-makers, and amateur enthusiasts



Vision

- strong outreach component
- encouraging audience participation in resource development and discovery
- advanced tools for intellectual property rights management as well as subscription-based resources



Vision

- will include
 - data management and infrastructure support for community projects
 - multimedia services
 - web templates for interactive identification guides and keys
 - geospatial applications/map-based tools
 - tools for amateurs to share their discoveries and learnings with other Sonoran Desert enthusiasts.



Vision

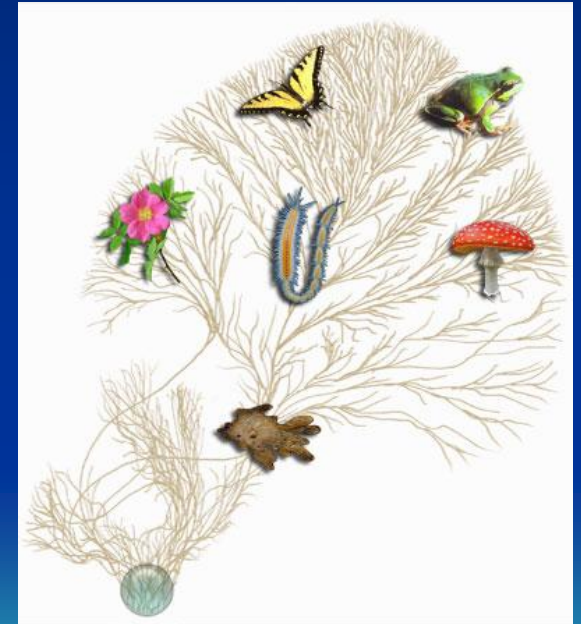
- data registry will catalog resources, providing metadata to increase access points and relevancy from SDKE partners and other content providers
- partner organizations will be able to both link to the main portal site and/or feature SDKE search and browse facilities on their own web pages





History of the Initiative

- Early 2006 - Grew out of talks with [Tree of Life Web Project](#)
- cSDDL – Collaborative Sonoran Desert Digital Library
- First meeting of interested parties in May 2006
- CoLAB Planning Session® in November 2006
- UAL Strategic Initiatives funding
- Grant-seeking in early 2007 resulted in LSTA funding for 07/08



Participants & Partners

- Arizona Cooperative Extension
- Arizona Geological Survey
- Arizona Museum of Natural History
- Arizona Native Plant Society
- Arizona-Sonora Desert Museum
- Arizona State Museum
- Boyce Thompson Arboretum
- Global Institute of Sustainability
- Learning Technologies Center
- **Office of Arid Lands Studies**
- **Pima County Public Libraries**
- Rincon Institute
- Robert L. Gilbertson Mycological Herbarium
- Santa Rita Experimental Range
- Science & Mathematics Education Center
- Sonoran Arthropod Studies Institute
- Sonoran Institute
- **Tree of Life Web Project & Outreach Programs**
- Tucson Audubon Society
- Tucson Bird Count
- Tucson Botanical Gardens
- UA Herbarium
- UA Natural History Museum
- UA School of Natural Resources/Conservation Genetics Laboratory
- Udall Center for Studies in Public Policy
- Western National Parks Association

OFFICE OF ARID LANDS STUDIES

...understanding and managing drylands



**Pima County
Public Library**

Project Development 2007-2008

- SDKE web portal
- Participant interviews
- Community Showcases

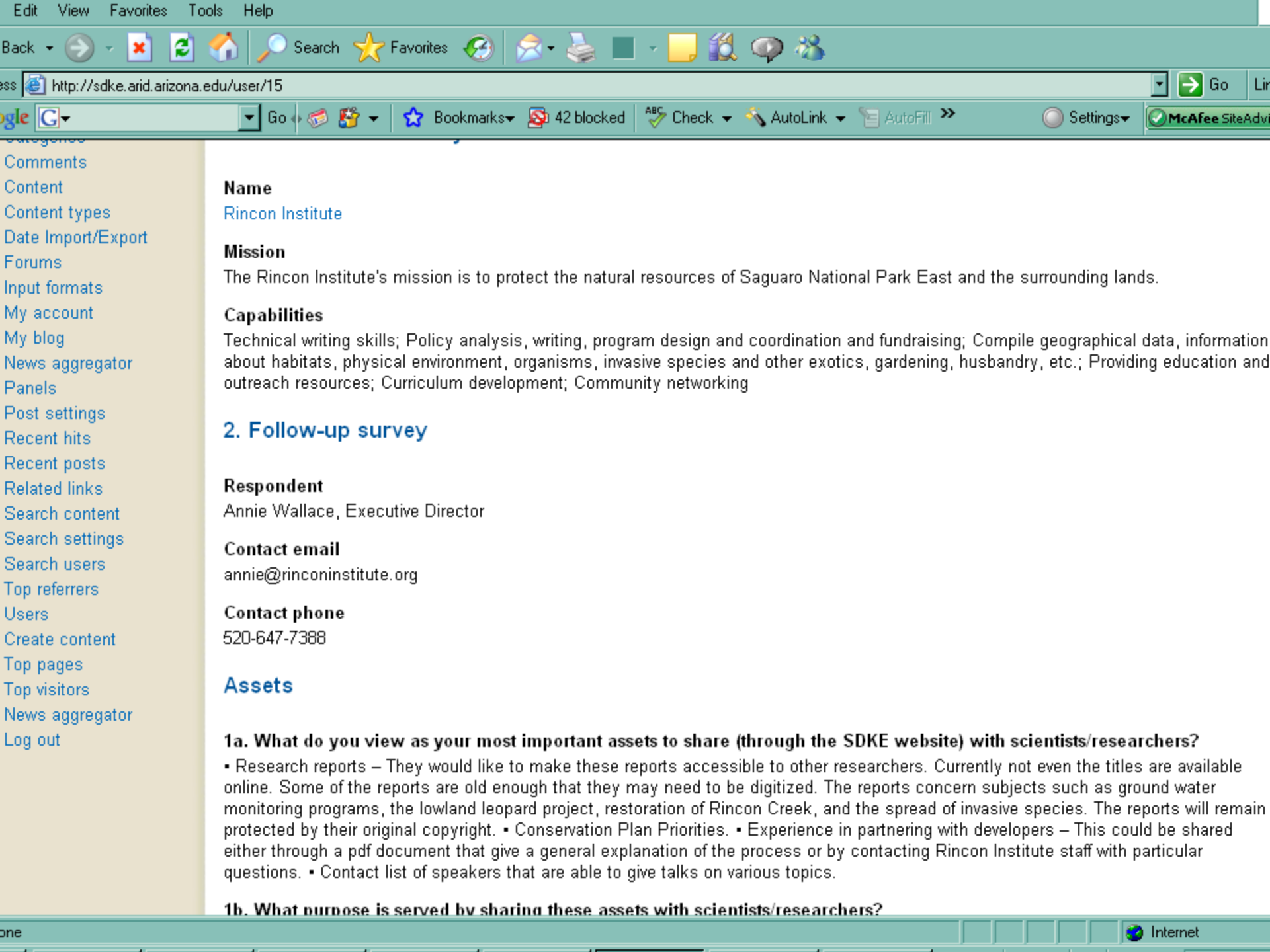


Interviews



- Developed interview questions, data collection tools
- Kim Franklin & Lisa Schwartz, Grad Assts
- ~25 interviews completed
- All interviews to be completed by June 1





Name

[Rincon Institute](#)

Mission

The Rincon Institute's mission is to protect the natural resources of Saguaro National Park East and the surrounding lands.

Capabilities

Technical writing skills; Policy analysis, writing, program design and coordination and fundraising; Compile geographical data, information about habitats, physical environment, organisms, invasive species and other exotics, gardening, husbandry, etc.; Providing education and outreach resources; Curriculum development; Community networking

2. Follow-up survey

Respondent

Annie Wallace, Executive Director

Contact email

annie@rinconinstitute.org

Contact phone

520-647-7388

Assets

1a. What do you view as your most important assets to share (through the SDKE website) with scientists/researchers?

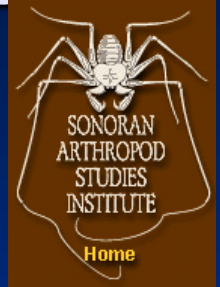
- Research reports – They would like to make these reports accessible to other researchers. Currently not even the titles are available online. Some of the reports are old enough that they may need to be digitized. The reports concern subjects such as ground water monitoring programs, the lowland leopard project, restoration of Rincon Creek, and the spread of invasive species. The reports will remain protected by their original copyright.
- Conservation Plan Priorities.
- Experience in partnering with developers – This could be shared either through a pdf document that give a general explanation of the process or by contacting Rincon Institute staff with particular questions.
- Contact list of speakers that are able to give talks on various topics.

1b. What purpose is served by sharing these assets with scientists/researchers?



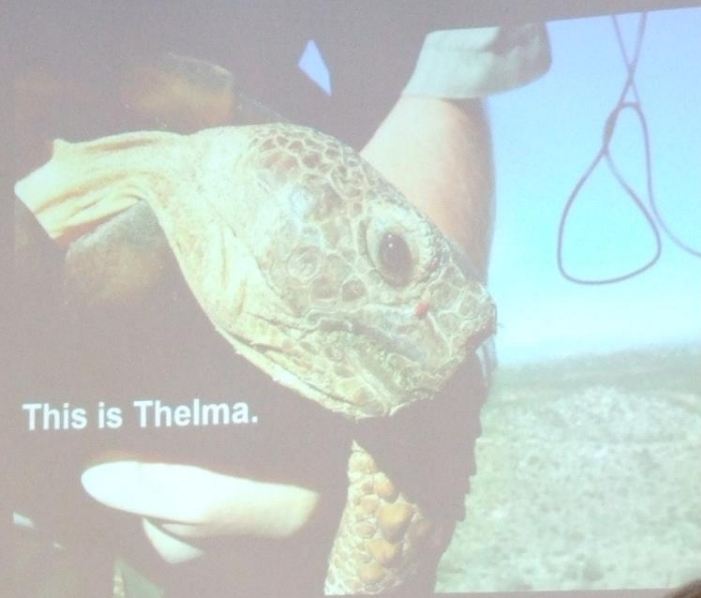
SDKE Community Meetings

Four Evening and Weekend Events



- Wednesday, Feb 26, 6-8PM, UA Spec Coll. UA Herbarium & UA Museum of Natural History
- **Saturday, Mar 15, 2-4PM**, Nanini Branch Library. Sonoran Arthropod Studies Institute, Tree of Life
- **Saturday, Apr 5, 2-4PM**, Miller-Golf Links Branch Library. Saguaro National Park. Desert Tortoises!
- **Thursday, Apr 17, 6-8PM**, Himmel Branch Library. Tucson Audubon Society, Tucson Bird Count





This is Thelma.





Next Steps

- Project Planning
- Build partner/participant community
- Continue Community Showcases
- Identify collections to digitize and pilot digitization
- Develop web portal functionality
- Seek external funding



Questions / Comments?

Contact us:

- Jeanne Pfander
pfanderj@u.library.arizona.edu
- Kimberly Chapman
chapmank@u.library.arizona.edu
- Jim Martin martinj@u.library.arizona.edu

